



Iron/Tones®
16-1/2" square drop-in/undermount bathroom sink, no
overflow
K-2827

Features

- Round-in-square basin
- No faucet holes; requires wall- or counter-mount faucet

Material

- KOHLER® enameled cast iron

Installation

- Drop-in or undermount

Recommended Products/Accessories

K-9018 P-Trap
K-23726 Drain treatment
K-23725 Cast iron cleaner

Included Components

1193643 Basin clamps



ADA

CSA B651

Codes/Standards

ASME A112.19.1/CSA B45.2

ADA

ICC/ANSI A117.1

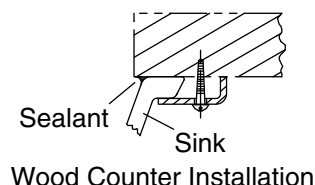
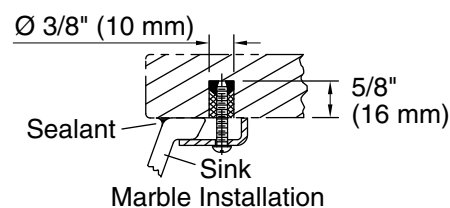
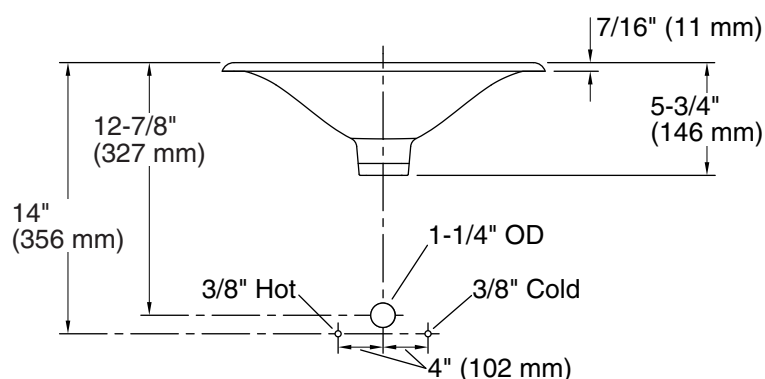
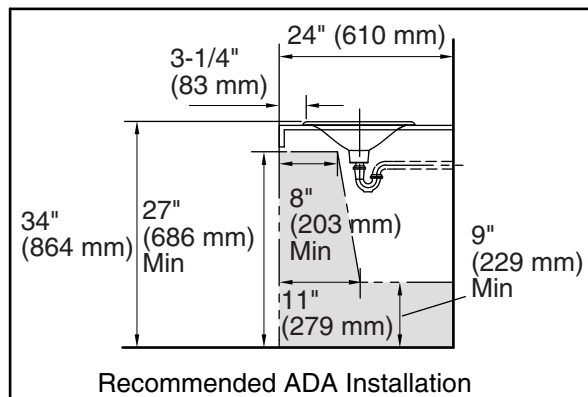
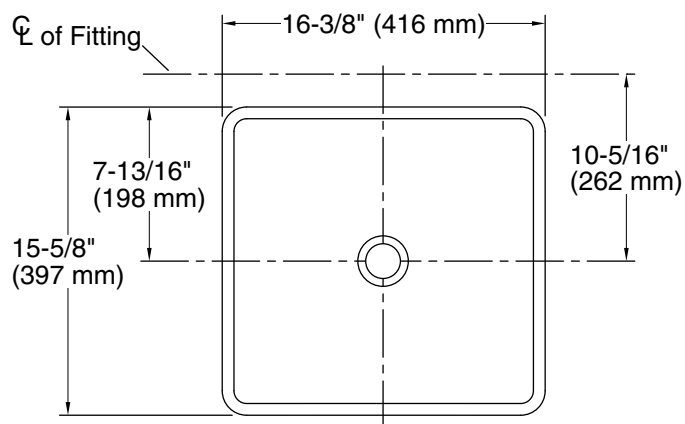
CSA B651

**KOHLER® Enameled Cast Iron
Kitchen and Bathroom Sink Lifetime
Limited Warranty**

See website for detailed warranty information.

KOHLER®

Iron/Tones® 16-1/2" square drop-in/undermount bathroom sink, no overflow K-2827



Technical Information

All product dimensions are nominal.

Basin configuration: Single Bowl

Bowl area (Only): Length: 15-1/4" (387 mm)
Width: 14-1/2" (368 mm)
Water depth: 3-3/4" (95 mm)

With overflow: No

Drain hole: 1-3/4" (44 mm)

Template: 1053507-7, required, included

Notes

Install this product according to the installation instructions.

Supplied basin clamp assemblies require 1" (25 mm) minimum countertop thickness. Installer must supply anchors for thinner countertops.

NOTICE: The countertop manufacturer or cutter must use the cut-out template provided with the product, or a current one provided by the Kohler Co. (call 1-800-4KOHLER.) Kohler Co. is not responsible for cut-out errors when the incorrect cut-out template is used.

ADA, CSA B651 compliant when installed to the specific requirements of these regulations.