



Thoreau®
Undermount bathroom sink
K-2907-8U

Features

- Oversized holes accommodate 8" widespread or single-hole faucet
- Oval basin

Material

- KOHLER® enameled cast iron

Installation

- Undermount

Recommended Products/Accessories

K-8998 P-Trap
K-23726 Drain treatment
K-23725 Cast iron cleaner

Included Components

1193643 Basin clamps



ADA

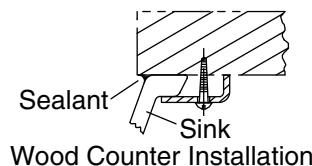
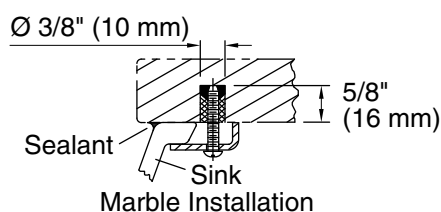
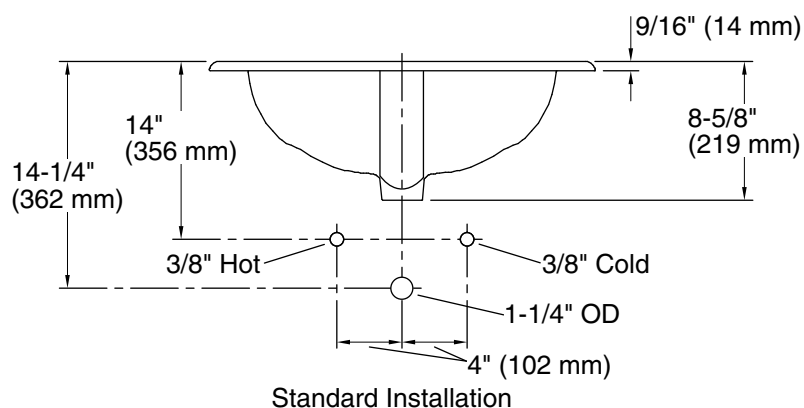
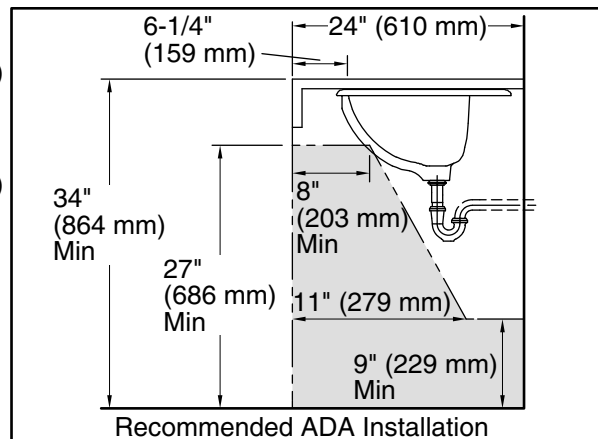
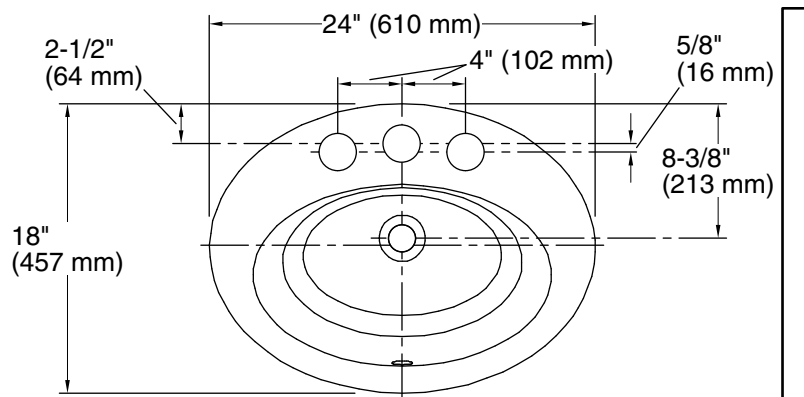
CSA B651

Codes/Standards

ASME A112.19.1/CSA B45.2
ADA
ICC/ANSI A117.1
CSA B651

**KOHLER® Enameled Cast Iron
Kitchen and Bathroom Sink Lifetime
Limited Warranty**

See website for detailed warranty information.



Technical Information

All product dimensions are nominal.

Basin configuration: Single Bowl

Bowl area: Length: 18-1/4" (464 mm)
Width: 11" (279 mm)
Water depth: 4-3/4" (121 mm)

Number of deck holes: 3

Faucet hole(s): 2-3/8" (60 mm)

Drain hole: 1-3/4" (44 mm)

Template: 114635-7, required, included

Notes

Install this product according to the installation instructions.

ADA, CSA B651 compliant when installed to the specific requirements of these regulations.