

Features

- Round-front bowl offers an ideal solution for smaller bathrooms and powder rooms
- Wall-hung design allows bowl to be set at preferred height
- 2 inch (51 mm) fully glazed trapway
- Washdown flushing system
- Mounting hardware is completely concealed, allowing the design lines to remain intact when installed
- Part of the Span Collection
- Bowl only: requires in-wall tank and carrier system, faceplate, and Span™ Quiet-Close™ seat (sold separately)

Installation

- Wall-hung
- 9 inch (225 mm) P-trap rough-in
- Installation hardware included
- Supply line sold separately



Codes/Standards

None Applicable


KOHLER® India Faucet, Sanitaryware and Bathing Products Limited Warranty

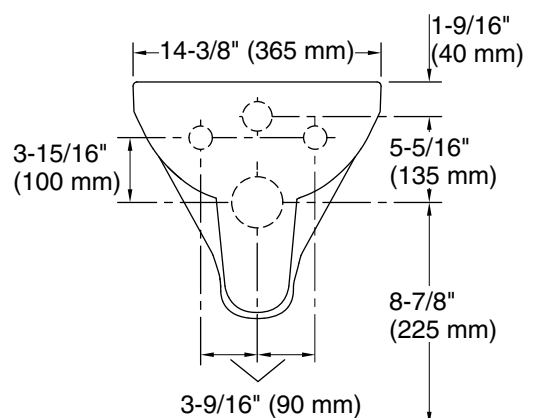
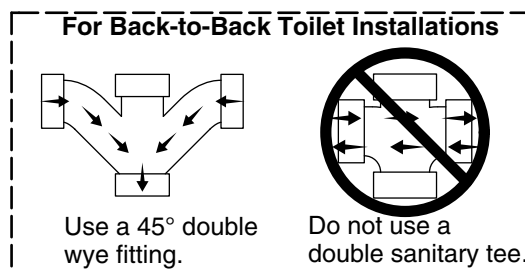
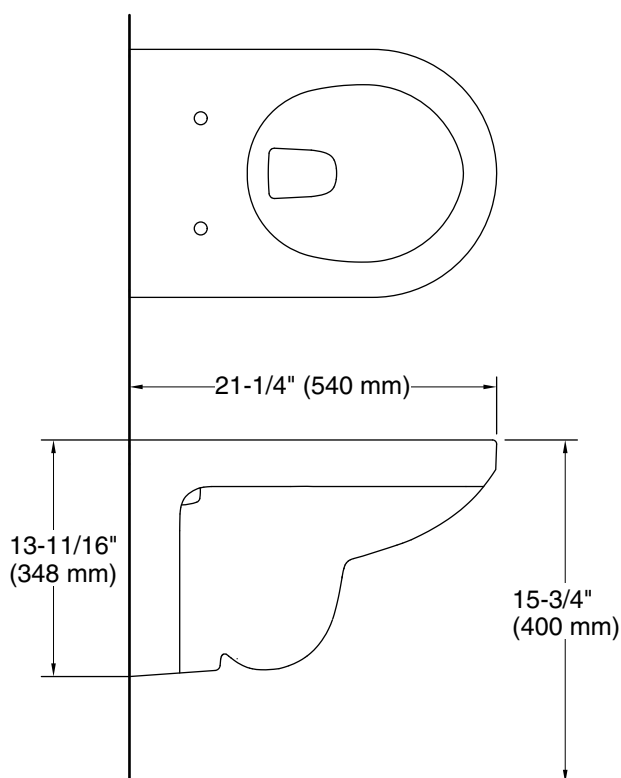
See website for detailed warranty information.

Available Colors/Finishes

Color tiles intended for reference only.

Color	Code	Description
-------	------	-------------

	0	White
---	---	-------



Technical Information

All product dimensions are nominal.

Toilet type: Wall-hung

Waste Outlet: Wall

Trap passageway: 2" (51 mm)

Notes

Install this product according to the installation instructions.