

Features

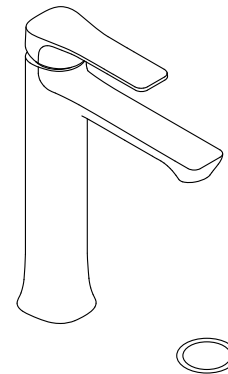
- Tall height is ideal for vessel-style sinks
- Single handle provides on/off activation, volume, and temperature control
- Red/blue indexing on handle
- 6-13/16" (173 mm) spout height
- 5-5/16" (135 mm) spout reach
- 2.2 gpm (8.3 lpm) maximum flow rate at 60 psi (4.14 bar)
- KOHLER® ceramic disc valves exceed industry longevity standards for a lifetime of durable performance
- Includes clicker drain with 1-1/4" (32 mm) metal tailpiece
- Includes installation hardware

Material

- Premium metal construction for durability and reliability
- KOHLER finishes resist corrosion and tarnishing

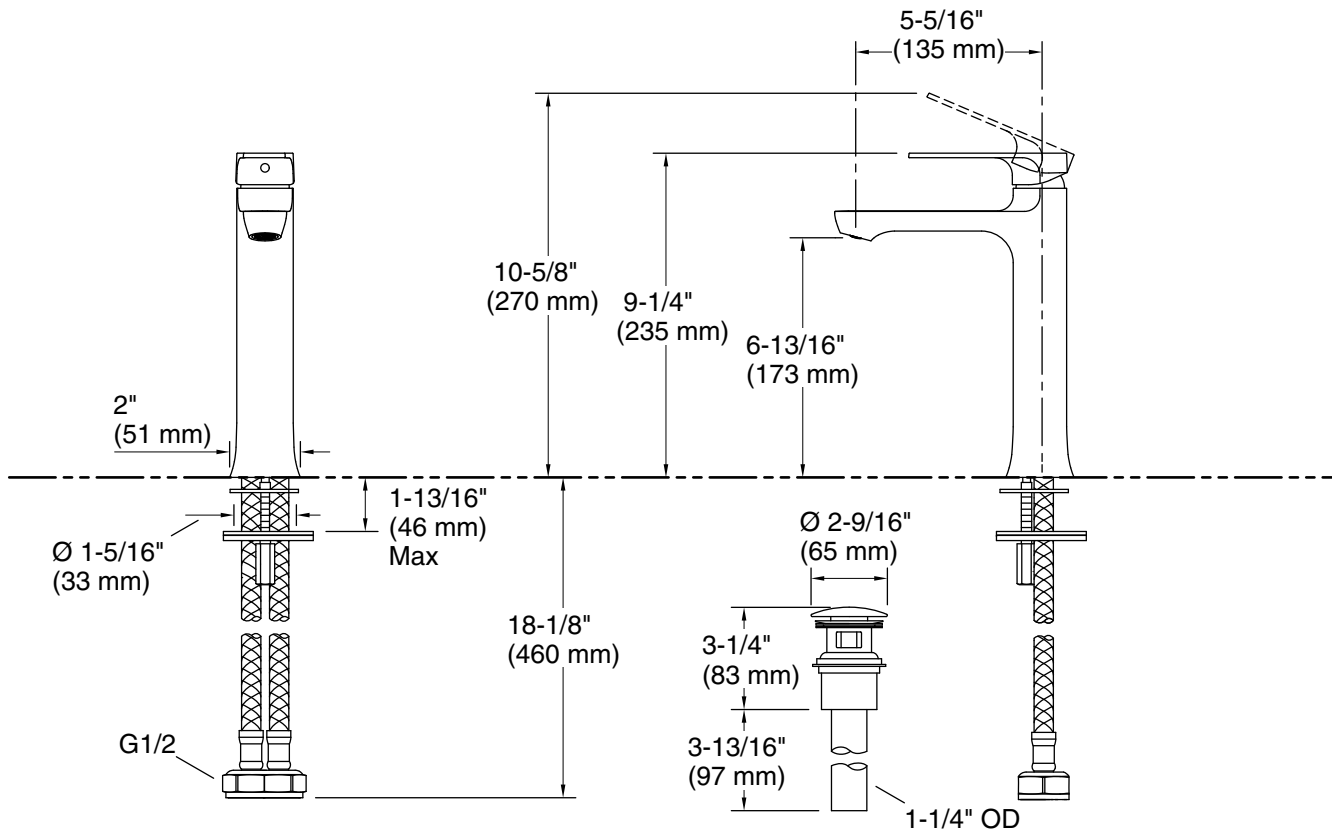
Installation

- Deck-mount
- Single-hole installation

**Codes/Standards**

Plumbing Standards
GB 18145

See website for detailed warranty information.



Technical Information

All product dimensions are nominal.

Faucet flow rate: 2.2 gal/min (8.3 l/min)

Drain included: Yes

Drain with overflow: Yes

Notes

Install this product according to the installation instructions.