

Features

- Single lever handle allows for both on/off activation and temperature setting
- 4-5/16" (110 mm) spout reach
- 2.2 gpm (8.3 lpm) maximum flow rate at 60 psi (4.14 bar)
- Red/blue indexing on handle
- Temperature memory allows faucet to be turned on and off at the temperature set during prior usage
- KOHLER ceramic disc valves exceed industry longevity standards by over two times, ensuring durable performance for life
- Includes cable pop-up drain with 1-1/4" (32 mm) tailpiece
- Part of the Accliv bathroom faucet and showering collection

Material

- Premium metal construction for durability and reliability
- KOHLER® finishes resist corrosion and tarnishing

Installation

- Deck-mount
- For single-hole installation
- Flexible supply lines simplify installation

Recommended Products/Accessories

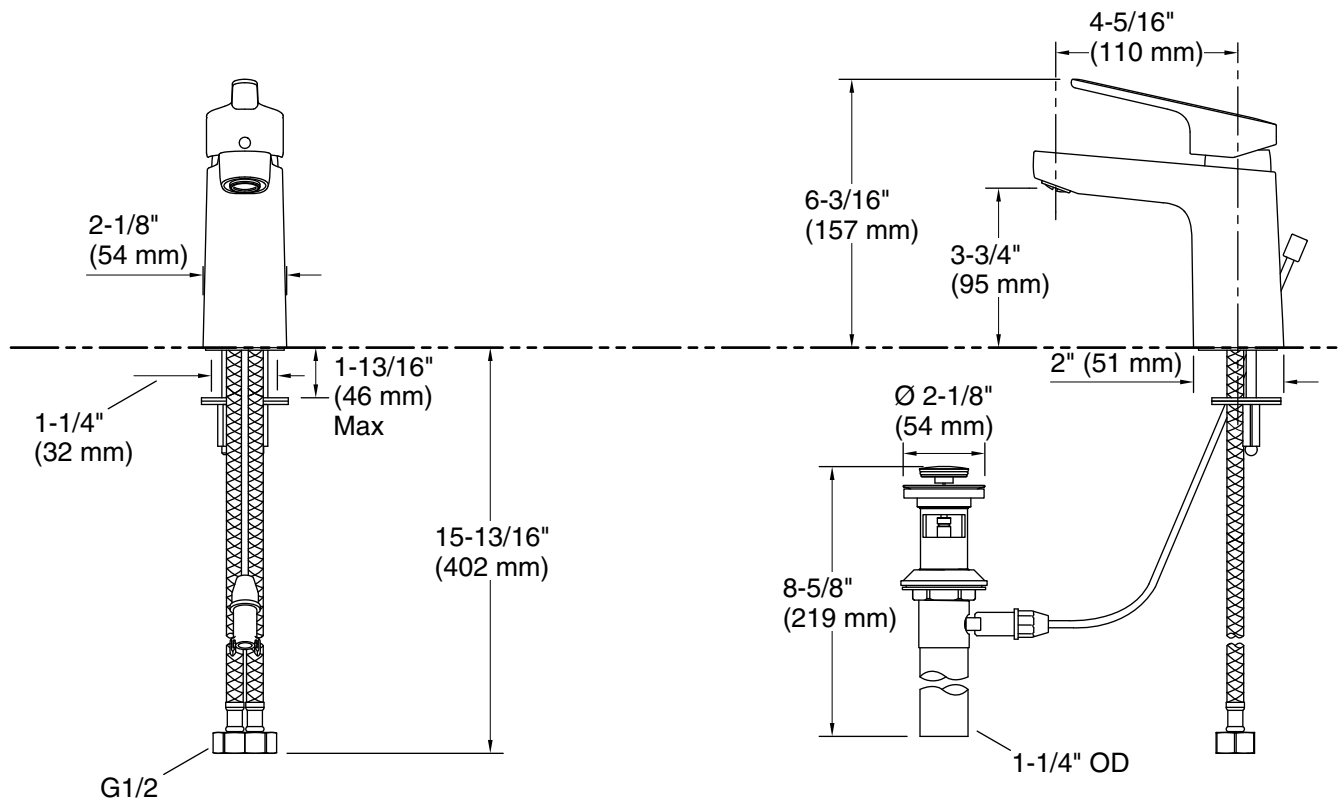
K-23726 Drain treatment
K-23723 Faucet cleaner



Codes/Standards

Plumbing Standards
GB 18145

See website for detailed warranty information.



Technical Information

All product dimensions are nominal.

Faucet:

Flow rate: 2.2 gal/min (8.3 l/min)

Pressure: 60 psi (4.1 bar)

Drain included: Yes

Drain with overflow: Yes

Spout:

Spout reach: 4-5/16" (110 mm)

Notes

Install this product according to the installation instructions.