

## Features

- Two full-extension 12-3/4" (325 mm) drawers with soft-close side-mount slides
- 18" (457 mm) cabinet interior with two shelves provides ample storage space
- Finish-matched cabinet interior
- Customize your storage with optional accessories such as floor liners, drawer organizers, and perfectly sized containers (sold separately)

## Material

- Solid wood and moisture-resistant MDF
- Painted exterior

## Installation

- Easy installation – no special tools required

## Recommended Products/Accessories

- K-33585 Drawer organizer set
- K-33543-ASB 24" bathroom vanity cabinet with sink and quartz top
- K-33544-ASB 30" bathroom vanity cabinet with sink and quartz top
- K-33545-ASB 36" bathroom vanity cabinet with sink and quartz top
- K-33546-ASB 48" bathroom vanity cabinet with sink and quartz top
- K-33547-ASB 60" bathroom vanity cabinet with sinks and quartz top
- K-33549-ASB 24" x 28" wall cabinet
- K-33550 3" cabinet pull



## Codes/Standards



EPA TSCA Title VI/CARB P2

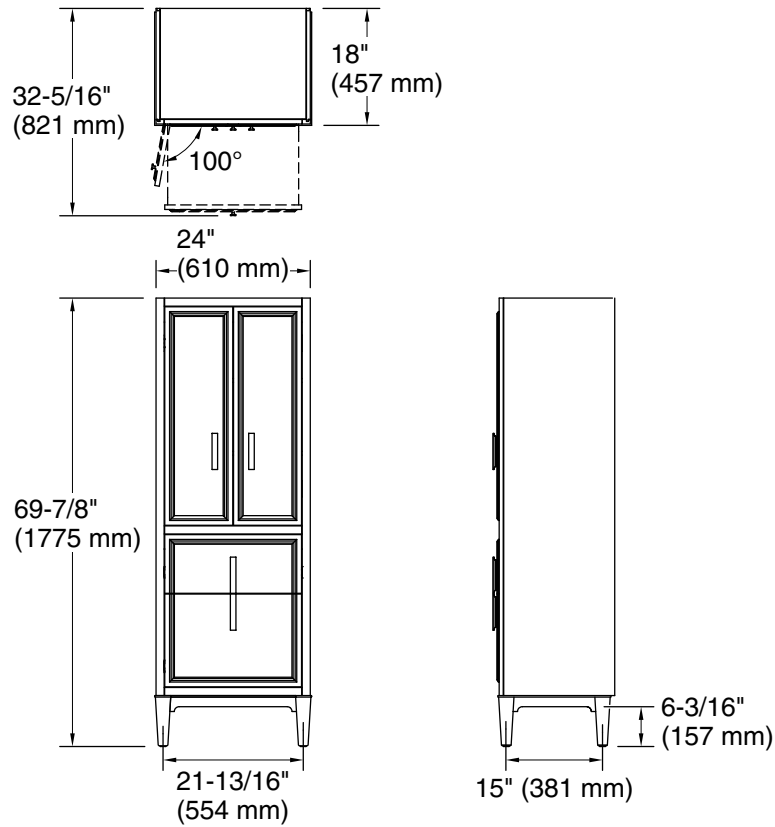
## KOHLER® One-Year Limited Warranty

See website for detailed warranty information.

## Available Colors/Finishes

*Color tiles intended for reference only.*

Color	Code	Description
	0	White
	1WX	Slate Grey



## Technical Information

All product dimensions are nominal.

## Notes

Install this product according to the installation instructions.