



Staccato™

33" top-mount double-bowl kitchen sink
K-3369-4

Features

- 36" minimum base cabinet width
- Double-equal bowls
- 8" (203 mm) depth
- Includes hardwood cutting board
- Includes installation hardware
- Three faucet holes and one accessory hole to the right

Material

- Premium 18-gauge stainless steel

Installation

- Top-mount

Recommended Products/Accessories

- K-5117 Right-Bowl Sink Rack
- K-5119 Left-Bowl Sink Rack
- K-8801 Sink drain and strainer with tailpiece
- K-8799 Sink drain and strainer basket
- K-23726 Drain treatment
- K-23729 Stainless steel cleaner

Optional Products/Accessories

- K-3370 Cutting Board
- K-8813 Stainless steel sink drain and strainer with tailpiece
- K-11352 Disposal Flange with Stopper



Codes/Standards

ASME A112.19.3/CSA B45.4

KOHLER® Stainless Steel Sinks Lifetime Limited Warranty

See website for detailed warranty information.

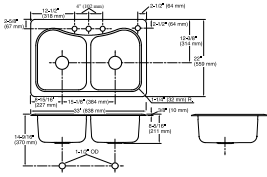
1-800-4KOHLER (1-800-456-4537)

Kohler Co. reserves the right to make revisions without notice to product specifications.

For the most current Specification Sheet, go to www.kohler.com USA or www.kohler.ca Canada

11-3-2024 22:48 - US/CA

THE BOLD LOOK
OF **KOHLER**®



Technical Information

All product dimensions are nominal.

Basin configuration:	Equal Bowls
Cutout:	Top-mount, 32-1/2" x 21-1/2" (826 mm x 546 mm) with 1" (25 mm) radius corners
Center(s):	8" (203 mm)
Bowl area (Left):	Length: 17-1/16" (433 mm) Width: 13-15/16" (354 mm) Bowl depth: 8-5/16" (211 mm) Water depth: 8" (203 mm)
Bowl area (Right):	Length: 17-1/16" (433 mm) Width: 13-15/16" (354 mm) Bowl depth: 8-5/16" (211 mm) Water depth: 8" (203 mm)
Number of deck holes:	4
Faucet hole(s):	1-7/16" (37 mm)
Drain hole:	3-5/8" (92 mm)

Notes

Install this product according to the installation instructions.