

Features

- Designed in collaboration with Dr. Jonathan Leary, founder and CEO of Remedy Place
- Temperature variability from 39°F — 104°F (3.9°C – 40°C) with automatic temperature sensor
- Integrated timer with guided breathwork light to encourage mindful breathing and track session progress
- Best-in-class ergonomics, featuring cushioned waterproof headrest for extra comfort and integrated grab points to safely enter and exit the bath
- Extra length and width to enhance bathing comfort
- UV light technology and 24/7 filtration for enhanced cleanliness
- KOHLER Konnect® app featuring educational videos and training content to help the user along their wellness journey
- Designed for seamless indoor home integration with water connection, built-in bath filler, and optional floor drain
- Built-in storage space for filter replacements, towels, and personal care items
- Two underwater outlets provide calming water movement and consistent circulation
- Control panel includes on/off, temperature adjustment control, cooling or heating status, and exterior lighting adjustment
- Intuitive filter replacement indicator for easy maintenance
- Included with Purchase: Ice Bath by Remedy Place, a cushioned waterproof headrest, an insulated spa cover with child protective locks, a surface skimmer net, and one 30-micron filter



Codes/Standards

UL 1563

KOHLER® x Remedy Place Ice Bath Two-Year Limited Warranty

See website for detailed warranty information.

Material

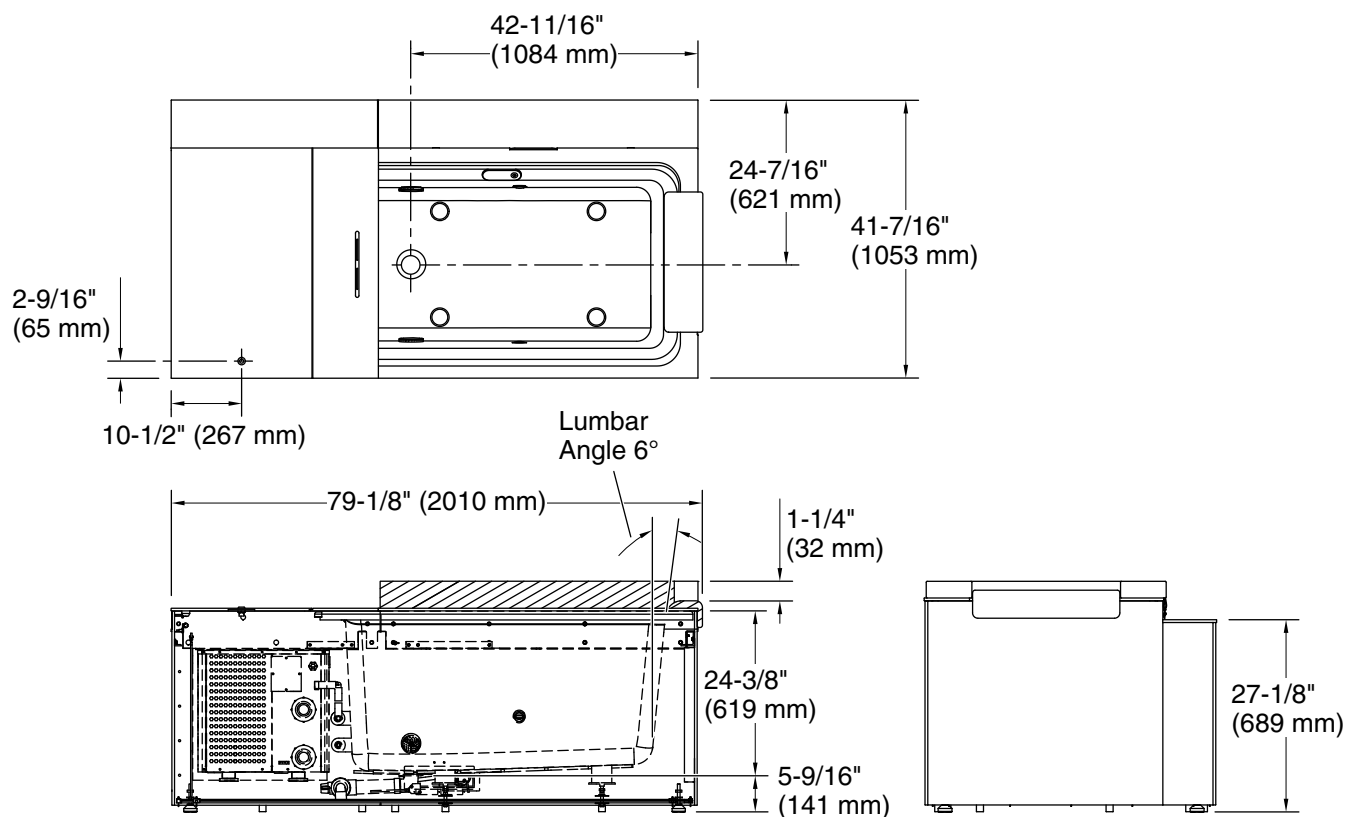
- Exterior Panels: High Pressure Laminate
- Bath: Avonite® Flex

Installation

- Freestanding indoor or outdoor
- If connecting to your in-home water supply, a vacuum breaker must be installed to the water supply pipe 6" (152 mm) above the Ice Bath rim. Consult local plumbing codes for required connections prior to installation

Recommended Products/Accessories

K-35851
K-35852



Required Electrical Service

One circuit required, protected with Class A Ground-Fault Circuit-Interrupter (GFCI). Outside North America, this device may be known as a Residual Current Device (RCD).

120 V, 20 A, 60 Hz

Notes

Measure your actual product for rough-in details.

Install this product according to the installation instructions.

Technical Information

All product dimensions are nominal.

Drain location:	Left
Basin area, bottom:	44-1/8" x 23" (1120 mm x 584 mm)
Basin area, top:	47-1/8" x 24-13/16" (1197 mm x 630 mm)
Weight:	605 lbs (274.4 kg)
Minimum floor load:	59.9 lbs/ft² (292.5 kg/m²)
Water depth:	18" (457 mm)
Water capacity:	85 gal (321.8 L)