



Lustra™

Elongated toilet seat with support arms
K-4654-A

Features

- Kohler plumbing products mean beautiful form as much as reliable function
- Antimicrobial agent inhibits growth of odor-causing bacteria, mold, and mildew. This product does not protect users against bacteria, viruses, or other disease organisms. Always clean and wash this product thoroughly before and after each use

Material

- Polypropylene



Codes/Standards

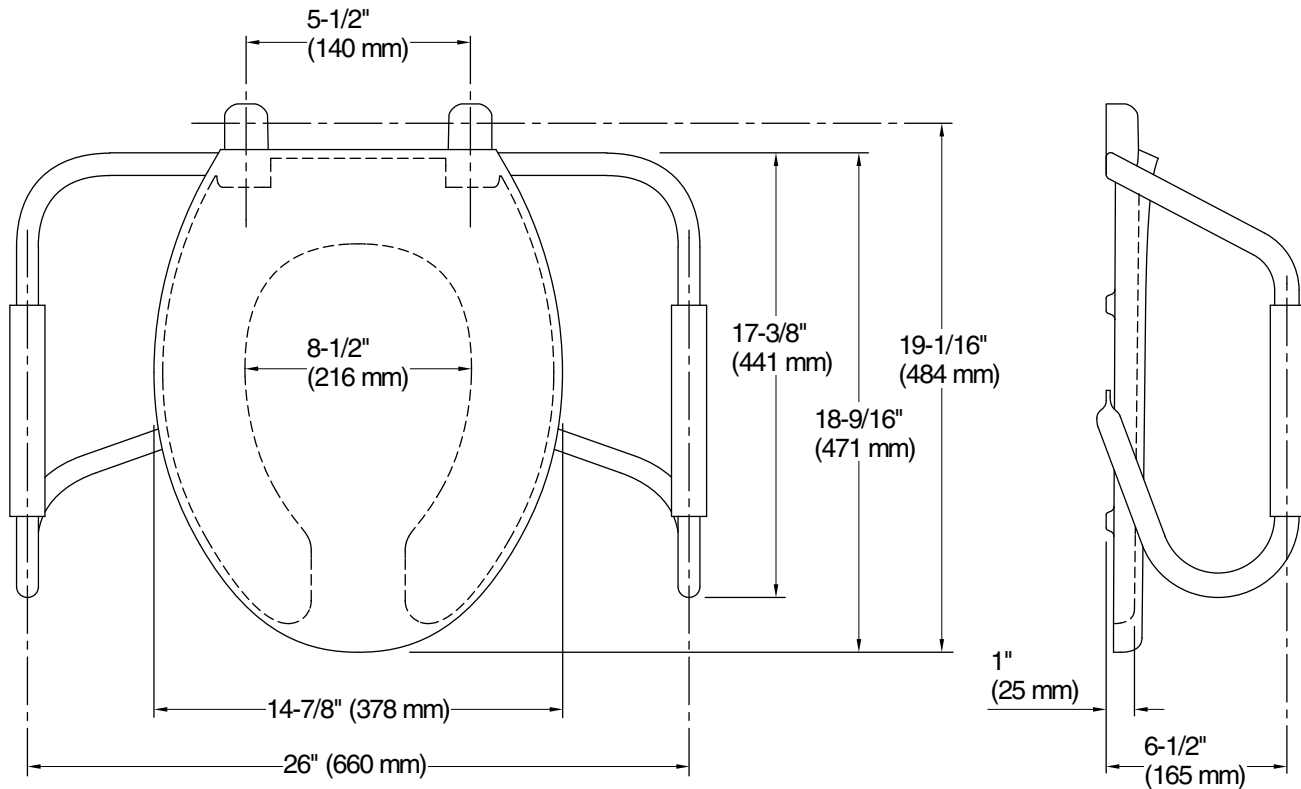
None Applicable

KOHLER® One-Year Limited Warranty

See website for detailed warranty information.



Lustra™
Elongated toilet seat with support arms
K-4654-A



Technical Information

All product dimensions are nominal.

Seat shape type: Elongated
Seat front type: Open-front
Seat-mounting holes: 5-1/2" (140 mm)

Pressure/fixture Supply Requirements

Notes

Install this product according to the installation guide.

NOTE: These toilet seats cannot be installed onto one piece toilets that have pre-installed anchor nuts.