

Features

- 36" minimum base cabinet width
- Extra-large/medium bowls
- Left bowl is sized to fit a half cookie sheet flat in the bottom of the basin
- 9" (229 mm) depth provides generous workspace
- Rear drain increases workspace in the sink and allows for more storage space underneath the sink
- Includes divider dishcloth bar, divider utility shelf, and bottom sink rack
- Includes installation hardware
- Rounded 10mm corners are easy to clean



Material

- Handcrafted from 16-gauge stainless steel
- Premium 16-gauge stainless steel

Installation

- Undermount

Recommended Products/Accessories

- K-6445 Sink Rack
- K-6647 Right-Bowl Sink Rack
- K-8801 Sink drain and strainer with tailpiece
- K-8799 Sink drain and strainer basket
- K-23726 Drain treatment
- K-23729 Stainless steel cleaner

Optional Products/Accessories

- K-6667 Wood Cutting Board
- K-11352 Disposal Flange with Stopper

Codes/Standards

ASME A112.19.3/CSA B45.4
IAPMO Certification

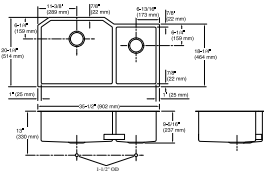
KOHLER® Stainless Steel Sinks Lifetime Limited Warranty

See website for detailed warranty information.



Strive®

35-1/2" undermount double-bowl kitchen sink
K-5282



Technical Information

All product dimensions are nominal.

Basin configuration: Large Bowl on Left

Min. base cabinet width: 36" (914 mm)

Bowl area (Left): Length: 20-3/4" (527 mm)
Width: 18-1/2" (470 mm)
Bowl depth: 9-5/16" (237 mm)
Water depth: 9" (229 mm)

Bowl area (Right): Length: 11-5/8" (295 mm)
Width: 16-1/2" (419 mm)
Bowl depth: 9-5/16" (237 mm)
Water depth: 9" (229 mm)

Drain hole: 3-11/16" (94 mm)

Template: 1281147-7, required, included

Notes

Install this product according to the installation instructions.

Allow a minimum of 3" (76 mm) clearance around the sink rim for clip attachment.

Minimum base cabinet width 36" - 39" (36" may require cabinet modifications). Consult an installer for confirmation.