



Mayfield™
25" top-mount single-bowl kitchen sink
K-5964-4

Features

- 27" (686 mm) minimum base cabinet width
- Single bowl
- 7-3/4" (197 mm) depth
- Three faucet holes and one accessory hole to the right

Material

- KOHLER® enameled cast iron

Installation

- Top-mount

Recommended Products/Accessories

- K-6003 Sink Rack
- K-8801 Sink drain and strainer with tailpiece
- K-8799 Sink drain and strainer basket
- K-23726 Drain treatment
- K-23725 Cast iron cleaner

Optional Products/Accessories

- K-11352 Disposal Flange with Stopper
- K-9000 P-Trap



Codes/Standards

ASME A112.19.1/CSA B45.2
IAPMO Certification

**KOHLER® Enameled Cast Iron
Kitchen and Bathroom Sink Lifetime
Limited Warranty**

See website for detailed warranty information.

Available Colors/Finishes

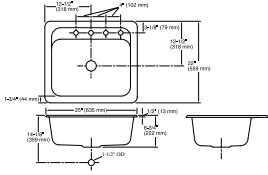
Color tiles intended for reference only.

Color Code Description

	0	White
---	---	-------



Mayfield™
25" top-mount single-bowl kitchen sink
K-5964-4



Technical Information

All product dimensions are nominal.

- Basin configuration: Single Bowl
- Cutout: Top-mount, 23-3/4" x 20-3/4" (603 mm x 527 mm) with 1" (25 mm) radius corners
- Center(s): 8" (203 mm)
- Min. base cabinet width: 27" (686 mm)
- Bowl area: Length: 22" (559 mm)
Width: 15" (381 mm)
Bowl depth: 7-3/4" (197 mm)
Water depth: 7-3/4" (197 mm)
- Number of deck holes: 4
- Faucet hole(s): 1-3/8" (35 mm)
- Drain hole: 3-5/8" (92 mm)

Notes

Install this product according to the installation instructions.