

### Features

- Set includes: Cabinet, precut Silestone® quartz vanity top, sink, cabinet legs, cabinet hardware, mounting hardware for sink
- Vanity top has single faucet hole with pilot holes for optional 8" (203 mm) widespread faucet configuration
- Full-extension 18" (457 mm) depth drawers with soft-close undermount slides for smooth opening
- Solid wood drawers with dovetail joint construction
- Vanity top is covered under the Silestone® 25-Year Limited Warranty
- Silestone® quartz provides exceptional durability and stain resistance, making it easy to maintain
- Caxton® Rectangle undermount sink has a streamlined design that is easy to clean
- Customize your storage with optional in-drawer accessories, medicine cabinet surrounds and side kits (sold separately)
- Optional vanity top side and backsplashes available (sold separately)

### Material

- Solid and composite wood
- Silestone® quartz vanity top
- Vitreous china sink
- Premium metal hardware for durability and reliability

### Required Products/Accessories

- K-28263 Silestone® quartz 37" backsplash
- K-33585 Drawer organizer set (Qty 2)

### Included Components

- K-28250 Silestone® 37" quartz vanity top with rectangular cutout
- K-EC20000 20-1/2" rectangular undermount bathroom sink
- K-33561 11-1/2" cabinet pull (Qty 2)
- K-33559 36" bathroom vanity cabinet



### Codes/Standards

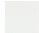

EPA TSCA Title VI/CARB P2

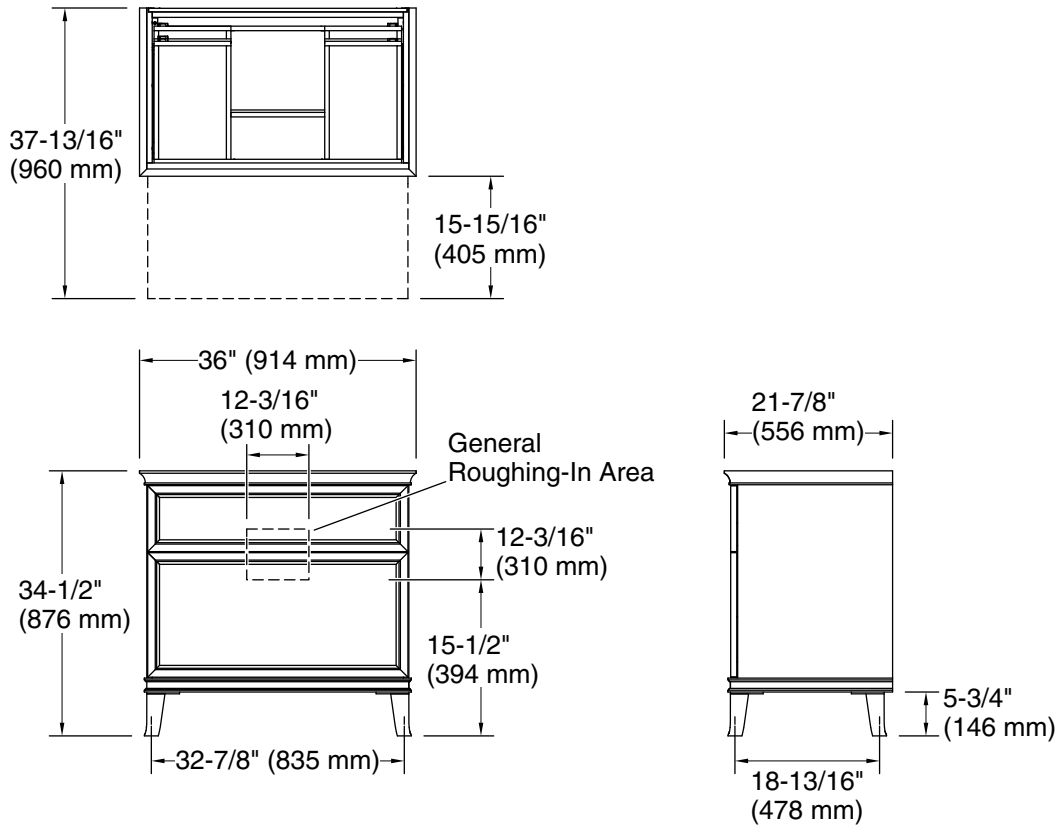
### KOHLER® One-Year Limited Warranty

See website for detailed warranty information.

### Available Colors/Finishes

*Color tiles intended for reference only.*

Color	Code	Description
	1WA	Linen White
	1WX	Slate Grey



## Technical Information

All product dimensions are nominal.

## Notes

Install this product according to the installation instructions.