

Features

- Set includes: Cabinet, precut Silestone® quartz vanity top, sink, cabinet hardware, mounting hardware for sink
- Vanity top has single faucet hole with pilot holes for optional 8" (203 mm) widespread faucet configuration
- Three-way adjustable slow-close door hinges for easy cabinet access
- Vanity top is covered under the Silestone® 25-Year Limited Warranty
- Silestone® quartz provides exceptional durability and stain resistance, making it easy to maintain
- Caxton® Rectangle undermount sink has a streamlined design that is easy to clean
- Customize your storage with optional in-door accessories, medicine cabinet surrounds and side kits (sold separately)
- Optional vanity top side and backsplashes available (sold separately)

Material

- Solid and composite wood
- Silestone® quartz vanity top
- Vitreous china sink
- Premium metal hardware for durability and reliability

Installation

- Wall-mount

Required Products/Accessories

- K-28261 Silestone® quartz 25" backsplash
- K-33585 Drawer organizer set
- K-99565 Metal Vanity Legs
- K-99681 Electrical outlets for KOHLER Tailored® vanities
- K-99688 3" cabinet pull

Included Components

- K-28246 Silestone® 25" quartz vanity top with rectangular cutout
- K-EC20000 20-1/2" rectangular undermount bathroom sink
- K-99688 3" cabinet pull (Qty 2)
- K-99539 24" wall-hung bathroom vanity cabinet



Codes/Standards

EPA TSCA Title VI/CARB P2



KOHLER® One-Year Limited Warranty

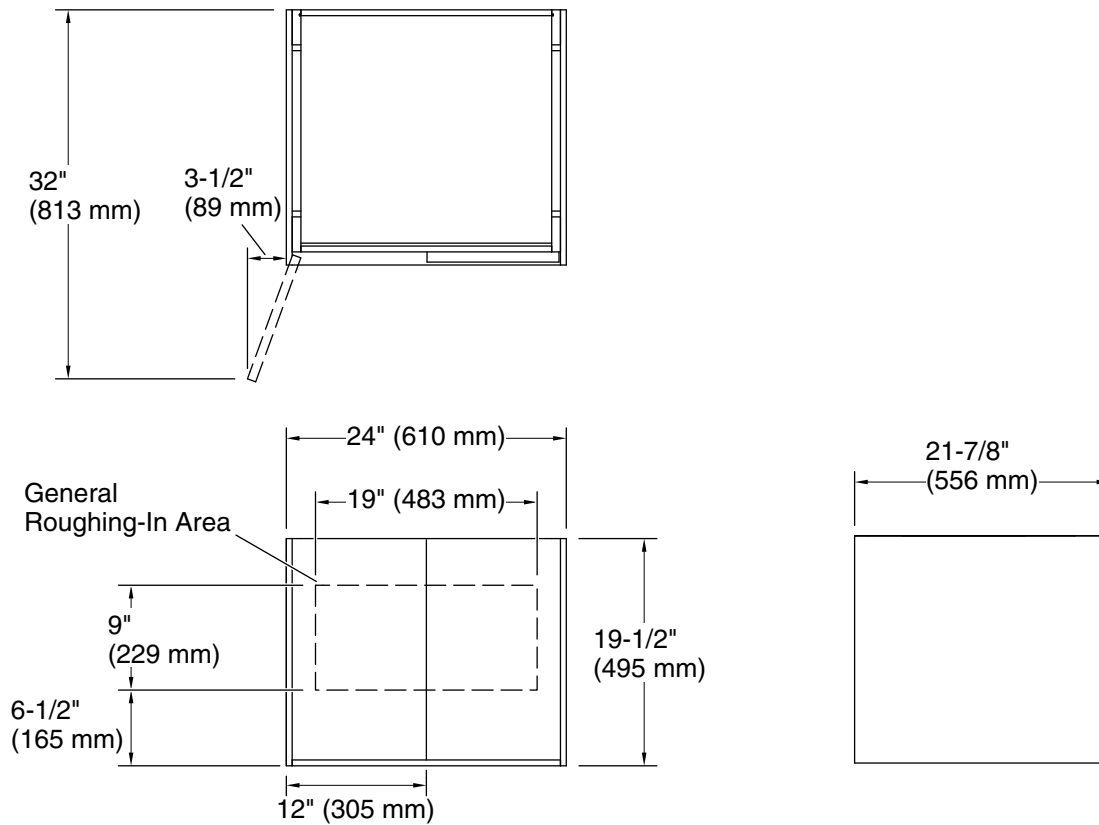
See website for detailed warranty information.

Available Colors/Finishes

Color tiles intended for reference only.

Color	Code	Description
-------	------	-------------

	1WA	Linen White
	1WM	Walnut Flax



Technical Information

All product dimensions are nominal.