



**Decree®**  
33" top-/undermount double-bowl workstation kitchen  
sink  
**K-R39832-1AC**

### Features

- 36" (914 mm) minimum base cabinet width
- Double-equal bowls
- 9" (229 mm) depth provides generous workspace
- Rear drain placement increases cabinet storage space underneath sink
- Bowls slope towards drains to minimize water pooling
- Single faucet hole
- Box includes: Sink, sink rack, drains and strainers, acacia cutting board, two-piece nested colander, cutout template, installation hardware

### Material

- Premium 18-gauge stainless steel
- Acacia wood
- Polypropylene

### Installation

- Top-mount or undermount

### Recommended Products/Accessories

- K-23381 sink rack for K-RH23376-4PC (Qty 2)
- K-8801 Sink drain and strainer with tailpiece (Qty 2)
- K-8799 Sink drain and strainer basket (Qty 2)
- K-23726 Drain treatment
- K-23729 Stainless steel cleaner

### Optional Products/Accessories

- K-9000 P-Trap

### Included Components

- K-21614 Colander set
- K-23379 cutting board
- K-23381 sink rack for K-RH23376-4PC (Qty 2)
- 7400 Stainless Steel Sink Drain and Strainer (Qty 2)

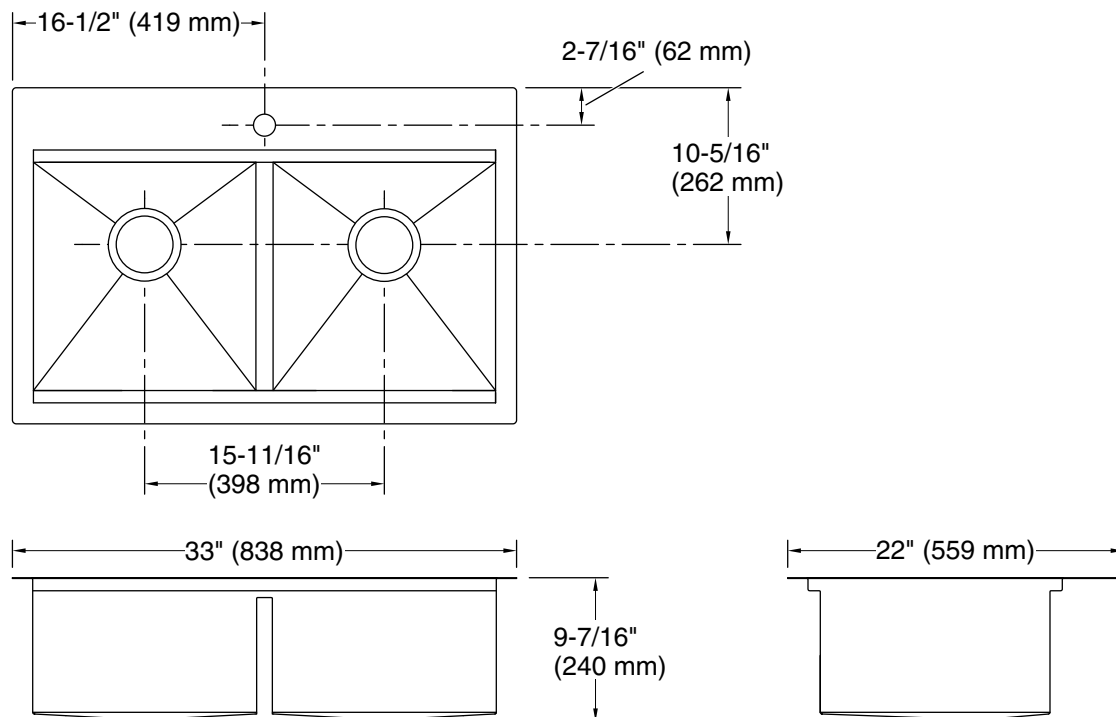


### Codes/Standards

ASME A112.19.3/CSA B45.4

### KOHLER® Stainless Steel Sinks Lifetime Limited Warranty

See website for detailed warranty information.



## Technical Information

All product dimensions are nominal.

Basin configuration: Equal Bowls

Min. base cabinet width: 36" (914 mm)

Bowl area (Double Equal Basins): Length: 14-9/16" (370 mm)  
Width: 14-15/16" (379 mm)  
Water depth: 9-3/16" (233 mm)

With overflow: No

Number of deck holes: 1

Faucet hole(s): 1-7/16" (37 mm)

Drain hole: 3-3/4" (94 mm)

Template: Top-mount/Undermount, 1130821-7, required, included

## Notes

Install this product according to the installation instructions.