

Features

- High-quality metal construction for durability and reliability
- Offers a customizable shower experience
- Patented K-joint installation ensures consistent trim appearance
- Required rough-in sold separately

Required Products/Accessories

- P29527-00 1/2" Volume Control Rough-In Assembly
 or
 P29528-00 3/4" Volume Control Rough-In Assembly

Recommended Products/Accessories

- P32708-WC Thermostatic Trim, White Carrara Cross Handle
 P32709-WC 002™ Transfer Trim, White Carrara
 P21513-00 Air-Induction Large Contemporary Rain Showerhead
 P34135-00 Round Contemporary Showerhead with Arm



ADA **CSA B651** **OBC**

Codes/Standards







ASME A112.18.1/CSA B125.1
 ADA
 ICC/ANSI A117.1
 CSA B651
 OBC

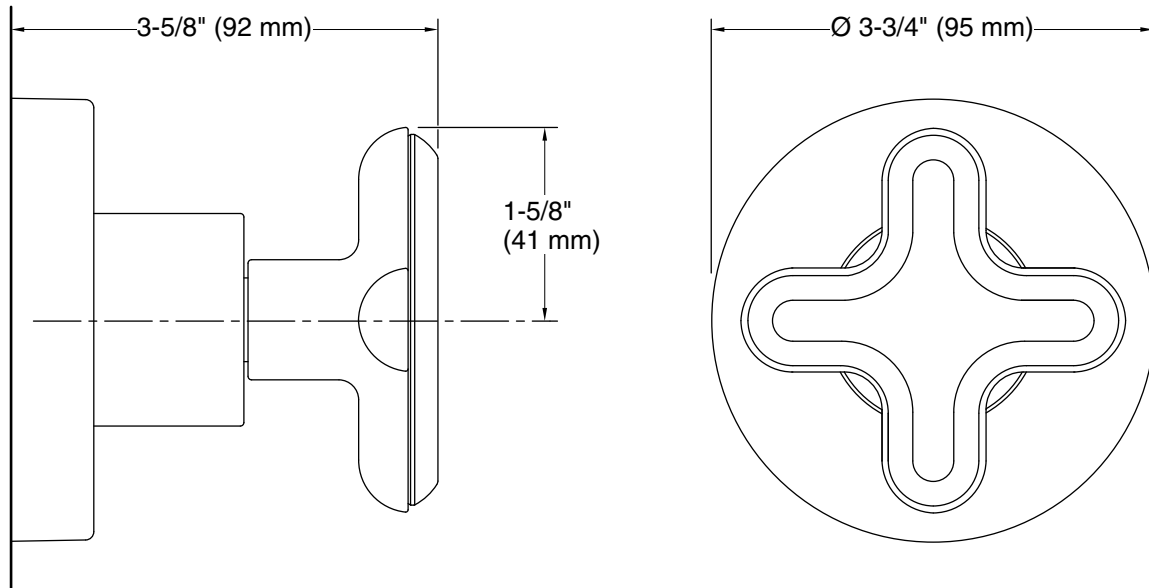
KALLISTA® Five-Year Limited Warranty

See website for detailed warranty information.

Available Colors/Finishes

Color tiles intended for reference only.

Color	Code	Description
	CP	Polished Chrome
	BL	Matte Black
	BAF	Brushed French Gold
	BN	Brushed Nickel
	SN	Polished Nickel
	2MB	Brushed Moderne Brass



Technical Information

All product dimensions are nominal.

Drain included: No

Notes

Install this product according to the installation instructions.

ADA, OBC, CSA B651 compliant when installed to the specific requirements of these regulations.