

Features

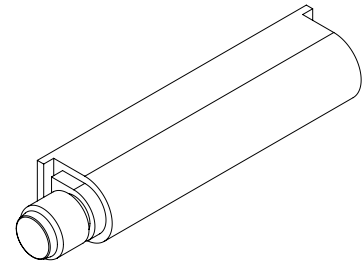
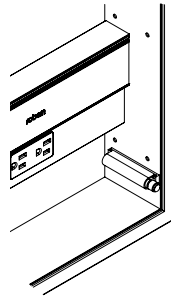
- Kit includes push-to-open mechanism, drill bit and fixture for easy installation
- Provides an alternative for those who prefer it over using the door pull
- Position of latch can be customized to your needs

Dimensions

Height: 5/8" (16 mm)
Width: 3/4" (19 mm)
Depth: 3-3/8" (86 mm)

Compatibility

- M Series
- PL Series
- AiO Single Door
- Main Line - Push-to-open



Dimensions

