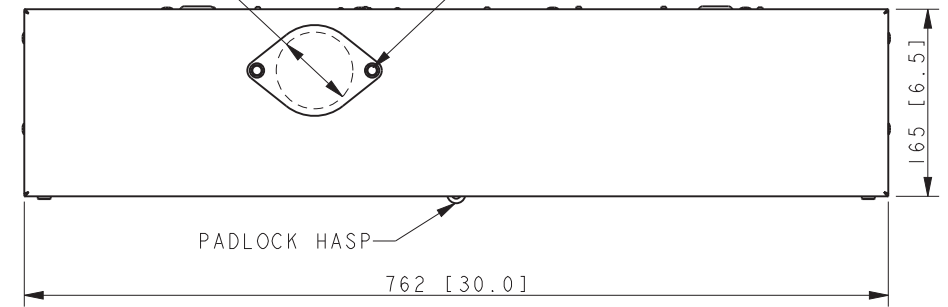
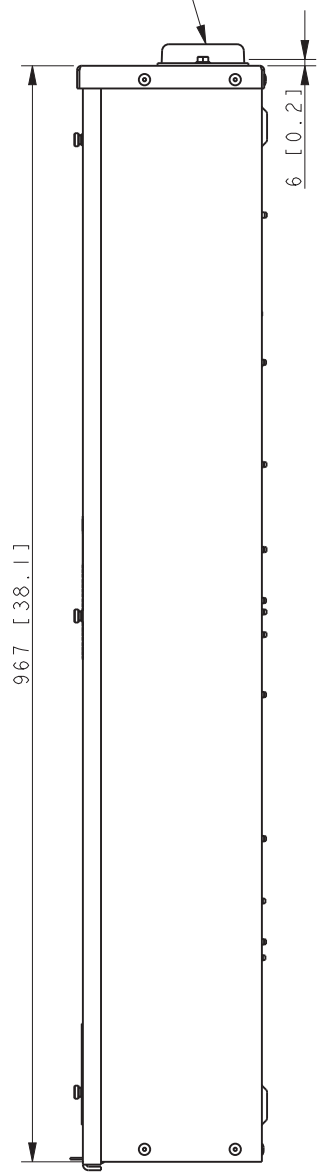


Ø67.6 [2.66] OUTSIDE

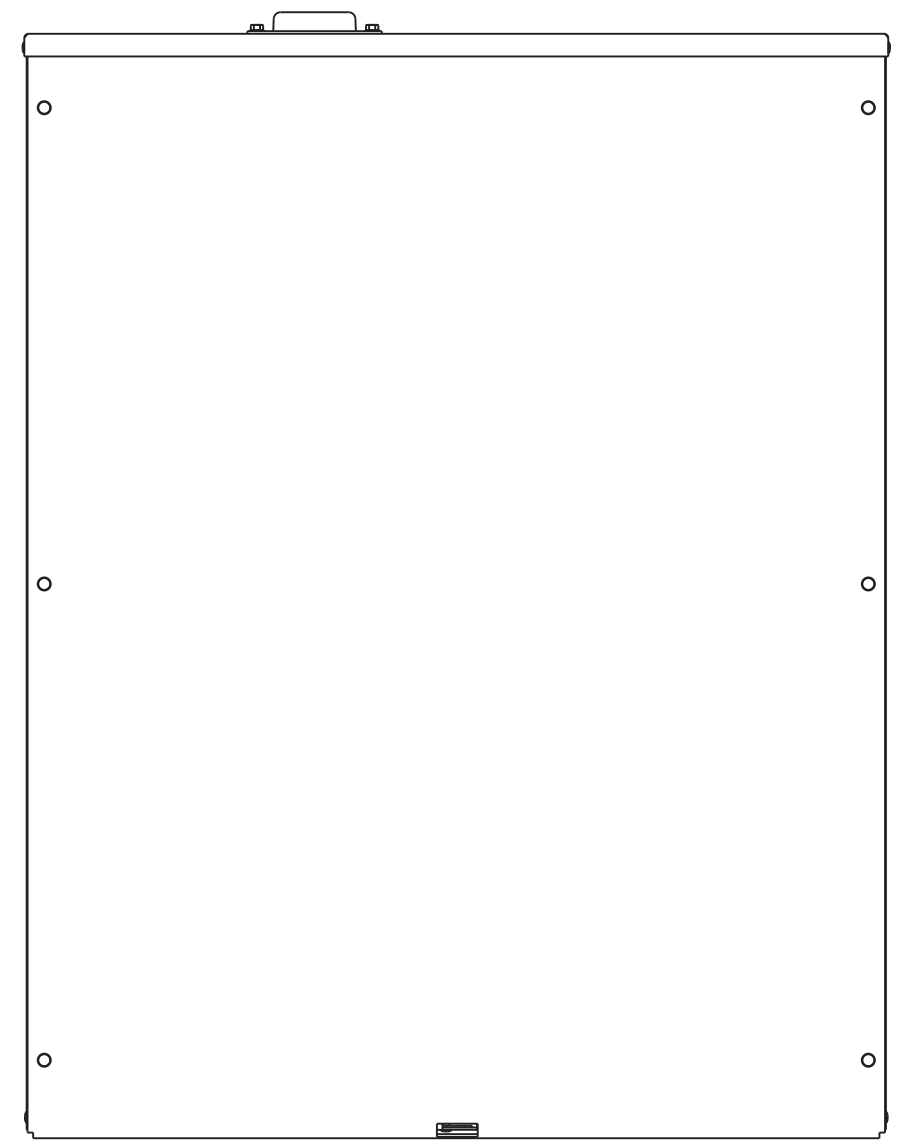
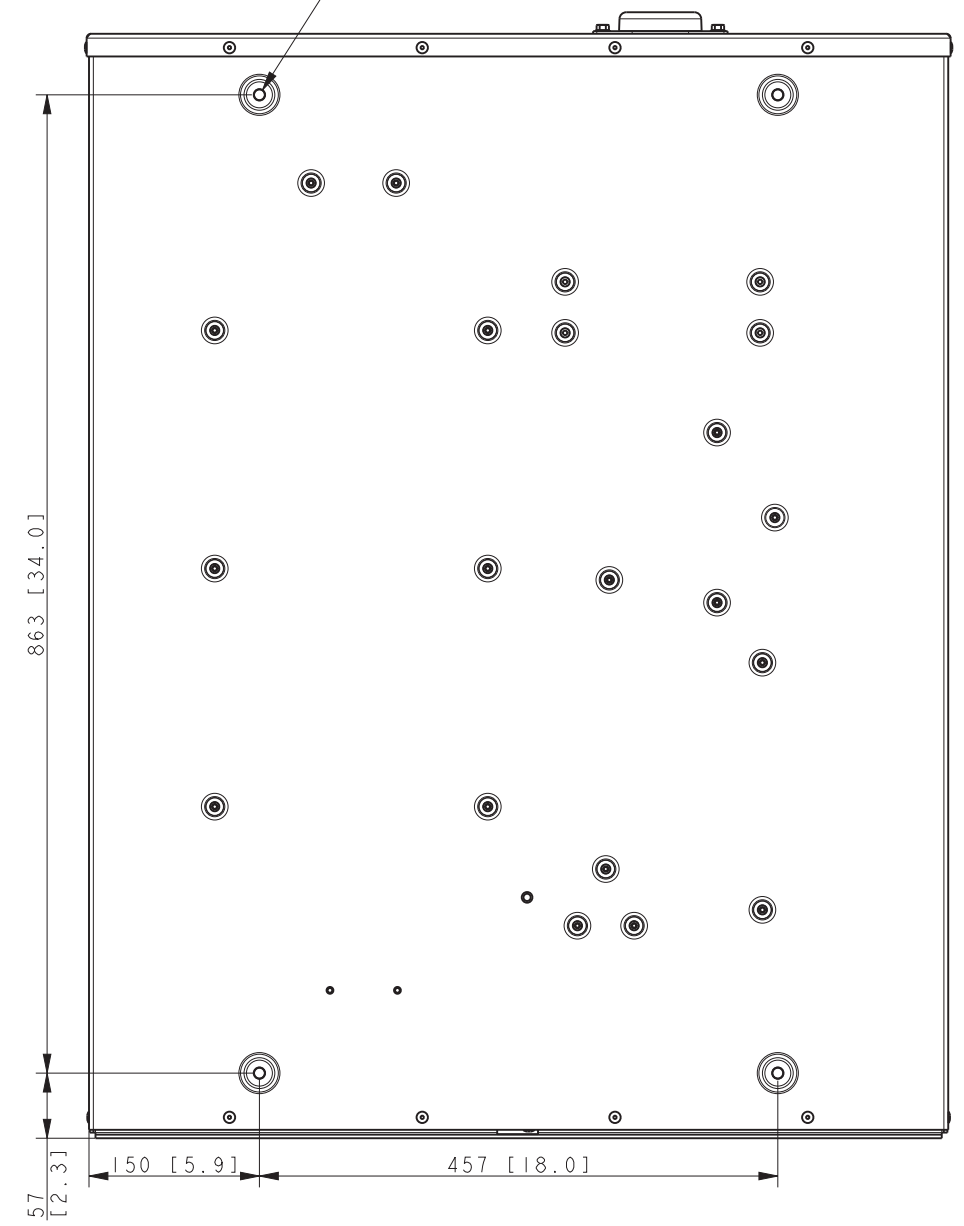
HOLE SIZED FOR 1/4-20 THREAD-FORMING SCREW
NOTE: THREAD SEALANT MUST BE APPLIED TO SCREW THREADS IF SCREWS ARE REMOVED OR REPLACED.



RAIN TIGHT HUB FLANGE (CAP INCLUDED) (NOT SHOWN) SEE FRONT VIEW



Ø10 [0.4] MTG. HOLES



NOTES:
DIMENSIONS IN [] ARE INCHES.
FINISH: ANSI 49 GRAY
REFER TO OPERATOR MANUAL PRIOR TO INSTALATION AND OPERATION OF UNIT.
APPROXIMATE WEIGHT: 32 Kg (70 LBS)
SERVICE DISCONNECT BREAKER IS 200A 80% RATED. CONTINUOUS LOAD CURRENT IS NOT TO EXCEED 80% OF BREAKER RATING.

200A SERVICE ENTRANCE WITH LOADCENTER
MPAC 500 CONTROLLER
NEMA 3R ENCLOSURE

REV	DATE	ON COMPOSITE DWGS. SEE PART NO. FOR REVISION LEVEL	BY
-	11-26-19	NEW DRAWING [CT199910]	IJM

APPROVALS	DATE
DRAWN IJM	11-26-19
CHECKED MTL	11-26-19
APPROVED MTL	11-26-19

KOHLER CO. METRIC PRO-E
POWER SYSTEMS, KOHLER, WI 53044 U.S.A.
THIS DRAWING IN DESIGN AND DETAIL IS KOHLER CO. PROPERTY AND MUST NOT BE USED EXCEPT IN CONNECTION WITH KOHLER CO. WORK. ALL RIGHTS OF DESIGN OR INVENTION ARE RESERVED.

TITLE: **DIMENSION PRINT, 200A RDT, 42 SP LC, SE, N3R**

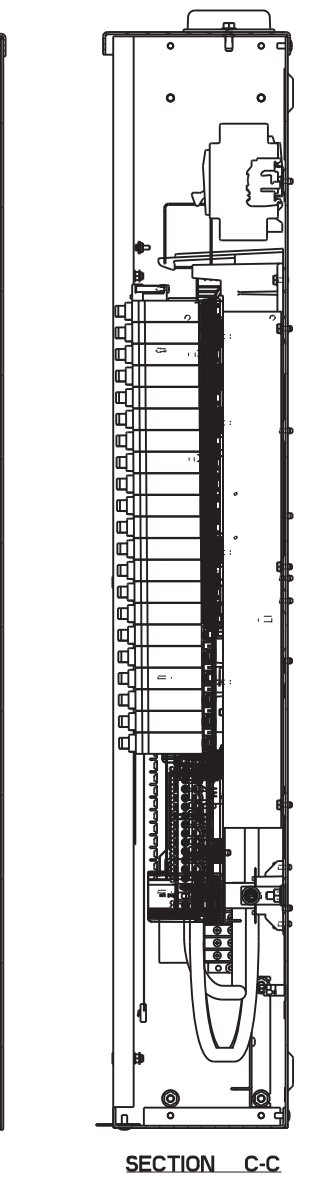
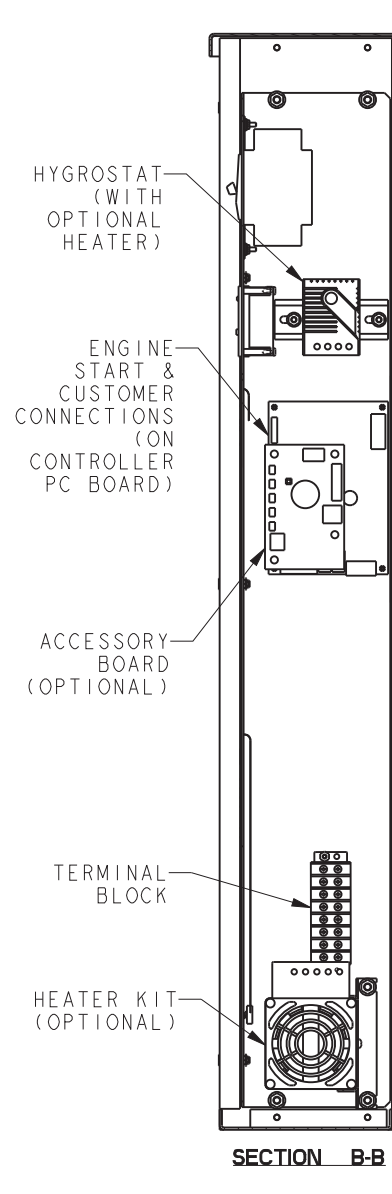
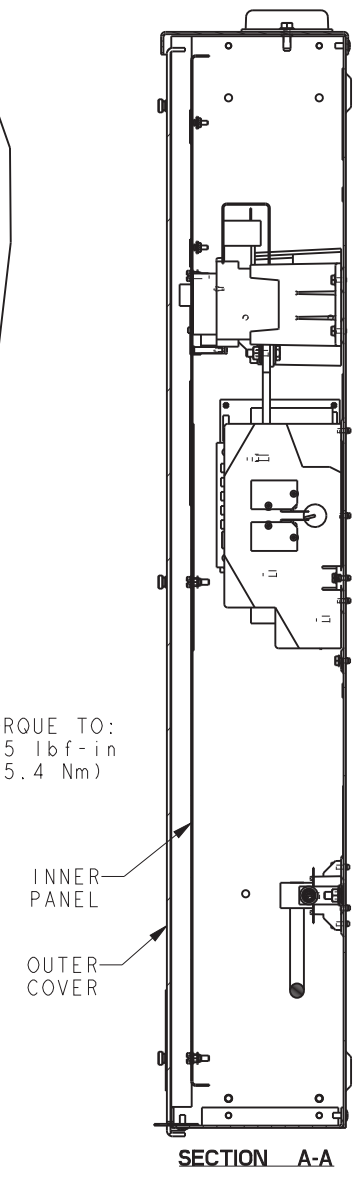
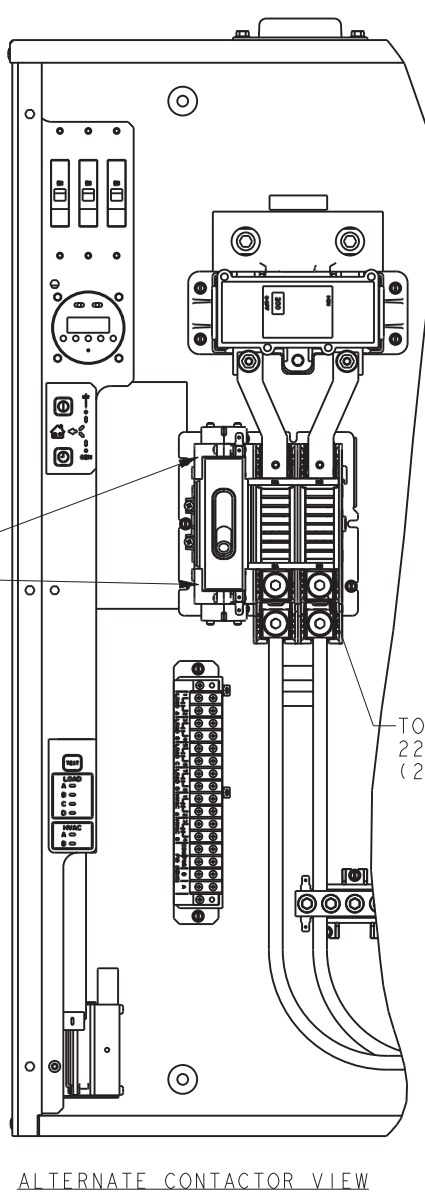
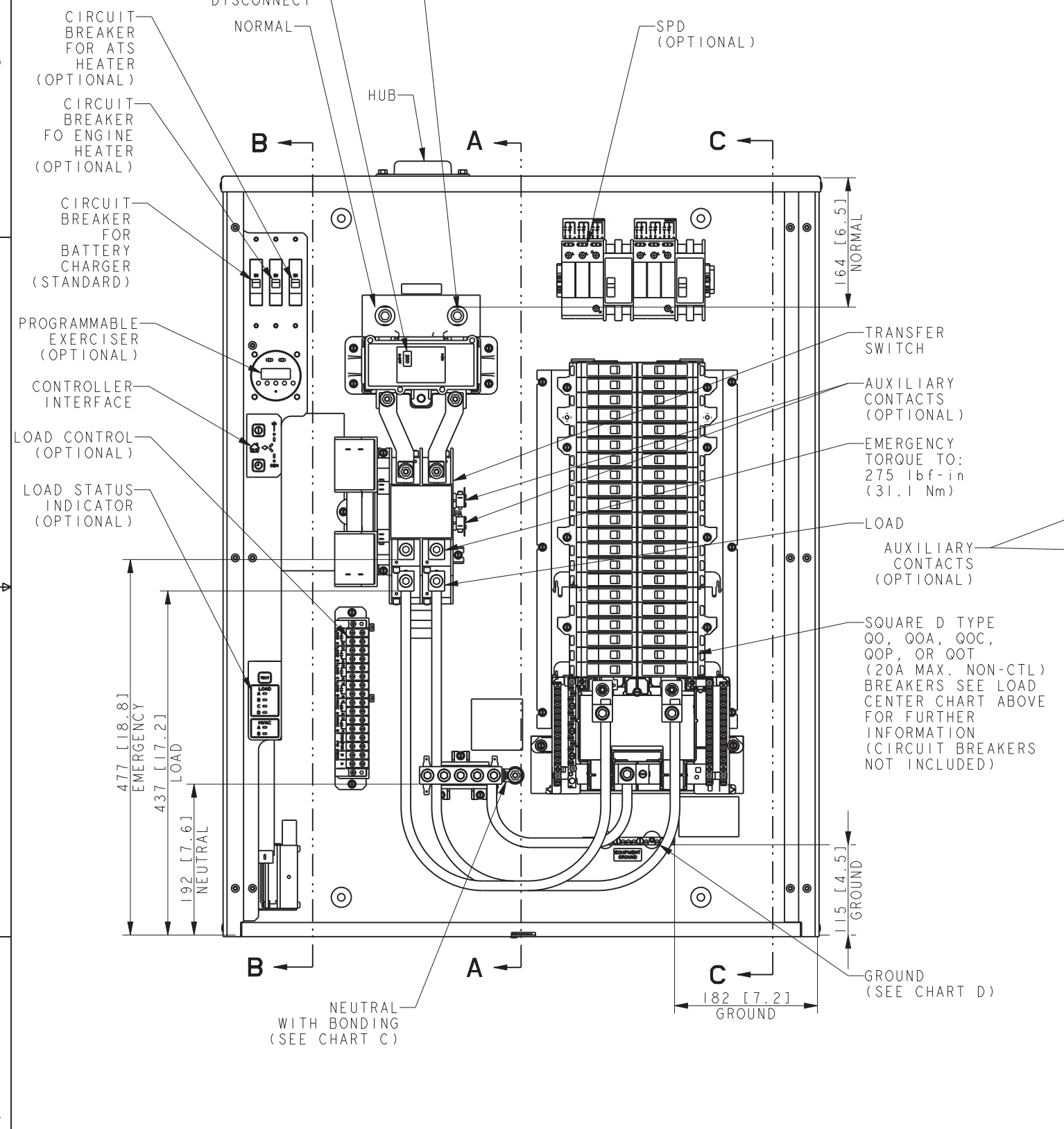
SCALE: 0.30 CAD NO. SHEET 1 of 3

DWG NO. **ADV-9185**

B: LOAD CENTER CHART INFORMATION			
SPACES	MAXIMUM NUMBER OF SINGLE POLE CIRCUITS	MAIN TERMINAL SIZE AWG	NUMBER OF BRANCH NEUTRAL TERMINALS
		Al OR Cu (75 °C)	
42	52	4-300 MCM	55

C: NEUTRAL TORQUE	
#14 - 10 AWG	60 lbf-in (6.8 Nm)
#8 - 3 AWG	120 lbf-in (13.6 Nm)
#2 - 2/0 AWG	240 lbf-in (27.1 Nm)
3/0 - 250 KCMIL	275 lbf-in (31.1 Nm)

D: GROUND TORQUE		
	LARGE HOLE	SMALL HOLE
#14 - 10 AWG	35 lbf-in (4 Nm)	#14-10 AWG 15 lbf-in (1.7 Nm)
#8 AWG	40 lbf-in (4.5 Nm)	
#6 - 4 AWG	45 lbf-in (5.1 Nm)	
#2 - 1/0	50 lbf-in (5.6 Nm)	#8-6 AWG 25 lbf-in (2.8 Nm)



SWITCH RATING (AMPS)	SCREW TYPE TERMINALS FOR EXTERNAL POWER CONNECTIONS			
	RANGE OF AL-CU WIRE SIZES			
	NORMAL SOURCE DISCONNECT BREAKER (PER PHASE)	CONTACTOR (PER PHASE)	NEUTRAL	GROUND
200	#4 AWG - 300 KCMIL	(1) #6 AWG - 250 KCMIL	(4) #12 - 250 KCMIL (Cu) OR (4) #10 - 250 KCMIL (Al)	(9) #14 - #6 AWG (4) 1/0 - #14 AWG

200A SERVICE ENTRANCE WITH LOADCENTER MPAC 500 CONTROLLER NEMA 3R ENCLOSURE

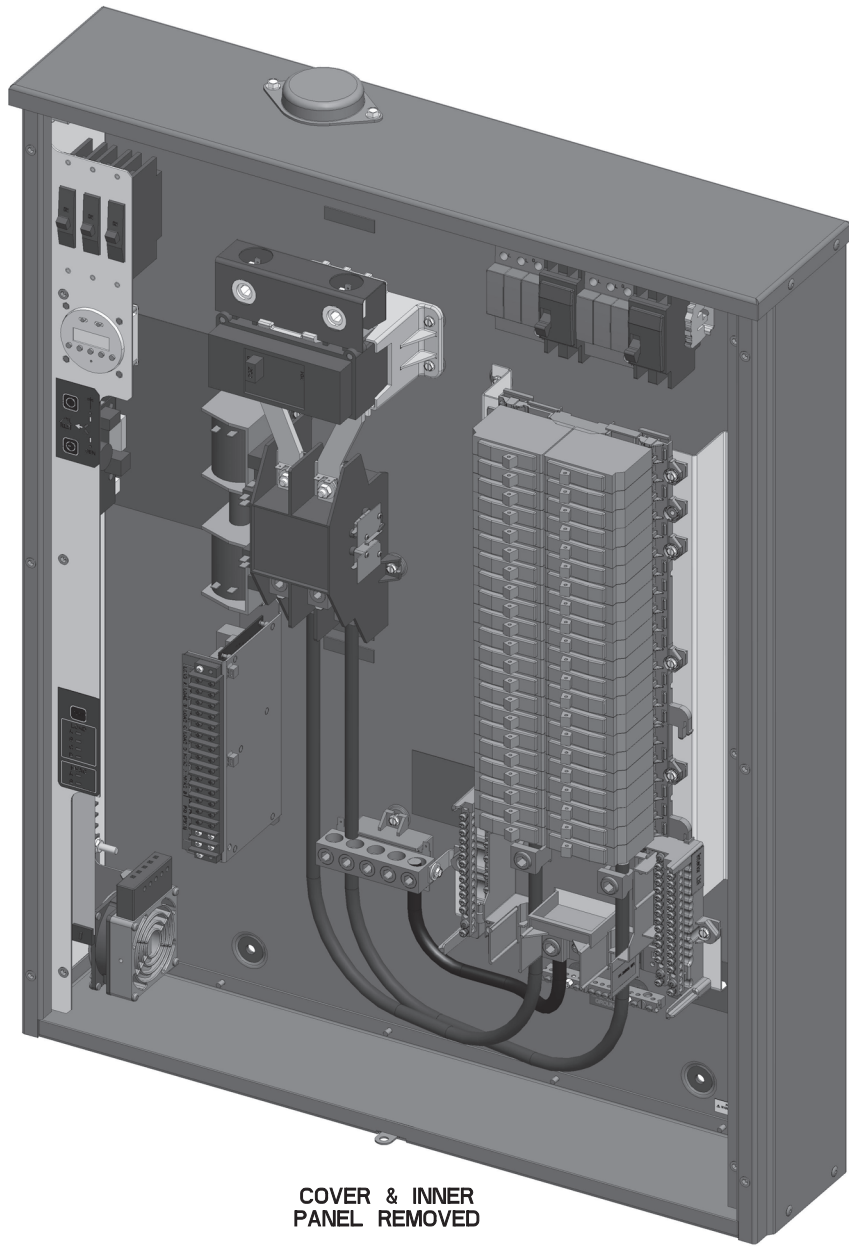
REV	DATE	ON COMPOSITE DWGS. SEE PART NO. FOR REVISION LEVEL	BY
-	11-26-19	NEW DRAWING [CT199910]	IJM

APPROVALS	DATE
DRAWN IJM	11-26-19
CHECKED MTL	11-26-19
APPROVED MTL	11-26-19

KOHLER CO. METRIC PRO-E
 POWER SYSTEMS, KOHLER, WI 53044 U.S.A.
 THIS DRAWING IN DESIGN AND DETAIL IS KOHLER CO. PROPERTY AND MUST NOT BE USED EXCEPT IN CONNECTION WITH KOHLER CO. WORK. ALL RIGHTS OF DESIGN OR INVENTION ARE RESERVED.

TITLE: **DIMENSION PRINT, 200A RDT, 42 SP LC, SE, N3R**

SCALE: 0.30 CAD NO. SHEET 2 of 3
 DWG NO. **ADV-9185**



**200A SERVICE ENTRANCE
WITH LOADCENTER
MPAC 500 CONTROLLER
NEMA 3R ENCLOSURE**

REV	DATE	ON COMPOSITE DWGS. SEE PART NO. FOR REVISION LEVEL	BY
-	11-26-19	NEW DRAWING [CT199910]	IJM

UNLESS OTHERWISE SPECIFIED -
1) DIMENSIONS ARE IN MILLIMETERS
2) TOLERANCES ARE:
X.XX ± 0.25
X.X ± 1.0
X ± 1.5
ANGLES ± 0° 30'
SURFACE FINISH MAX.
THIRD ANGLE PROJECTION

KOHLER CO. METRIC PRO-E
POWER SYSTEMS, KOHLER, WI 53044 U.S.A.
THIS DRAWING IN DESIGN AND DETAIL IS KOHLER CO. PROPERTY AND MUST NOT BE USED EXCEPT IN CONNECTION WITH KOHLER CO. WORK. ALL RIGHTS OF DESIGN OR INVENTION ARE RESERVED.

TITLE: **DIMENSION PRINT, 200A RDT, 42 SP LC, SE, N3R**

SCALE 0.30 CAD NO. SHEET 3 of 3
DWG NO. **ADV-9185** D