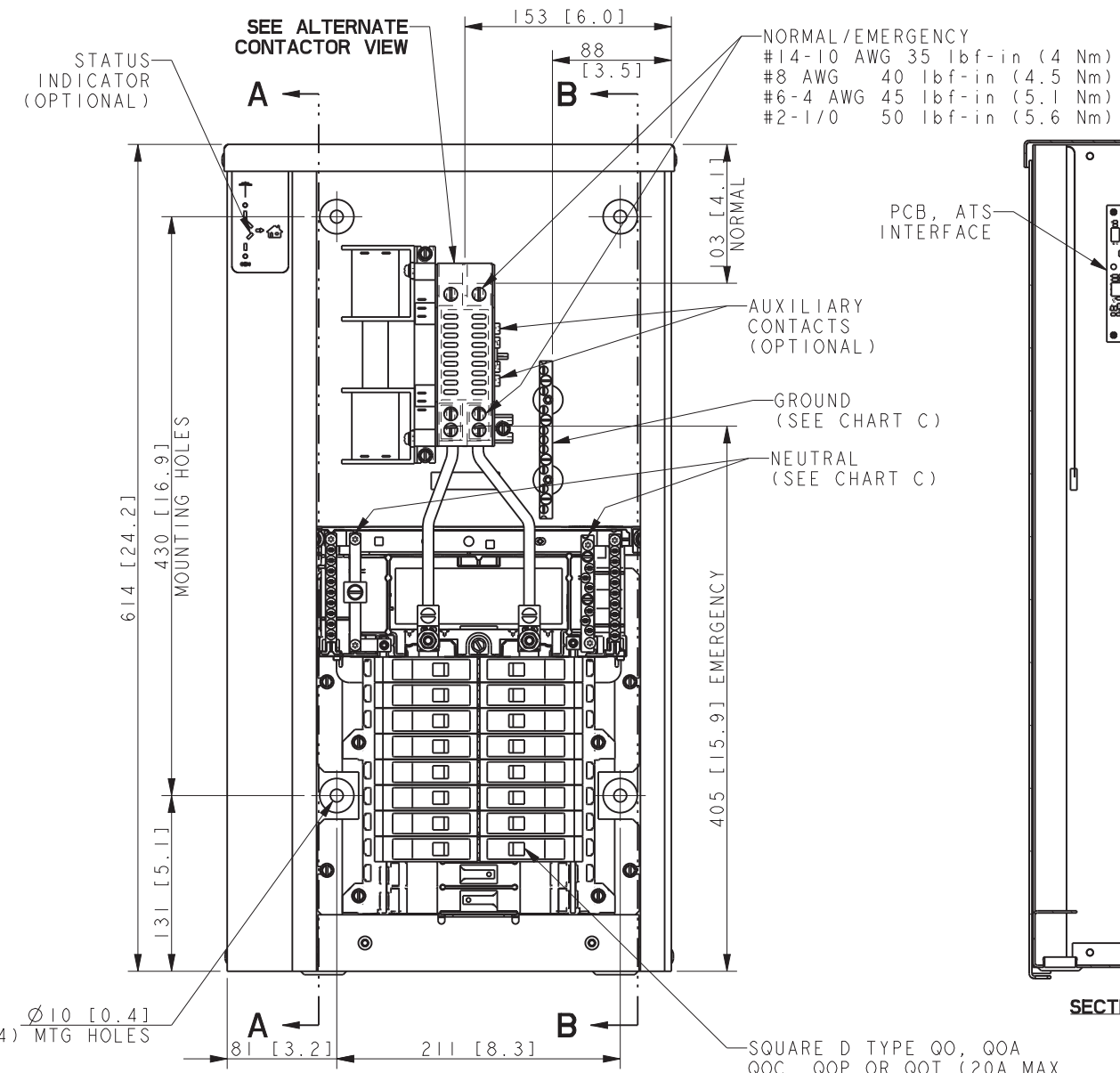
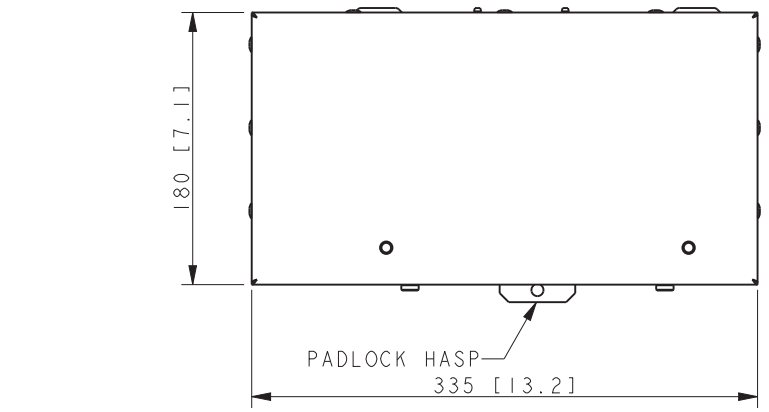
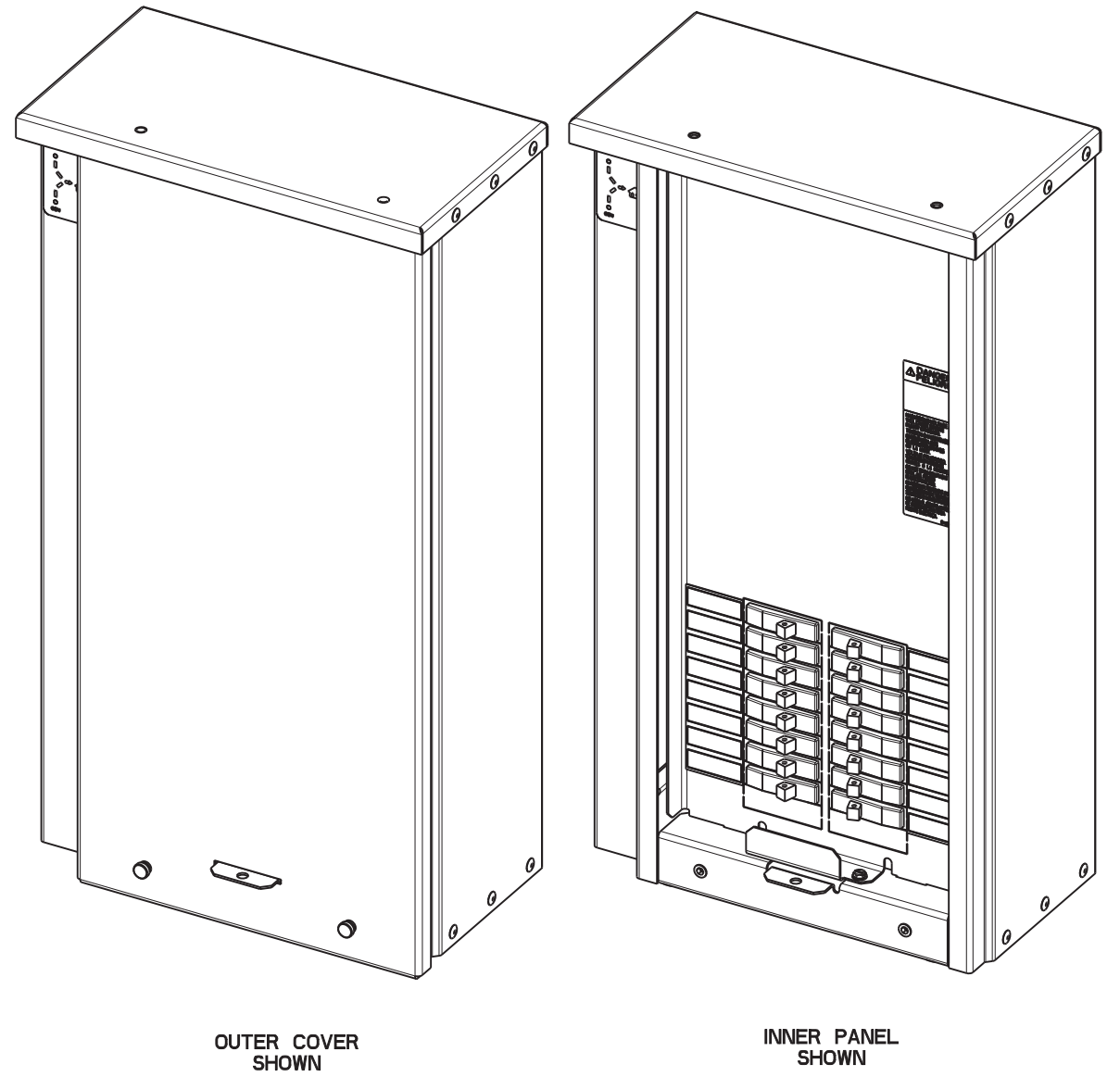
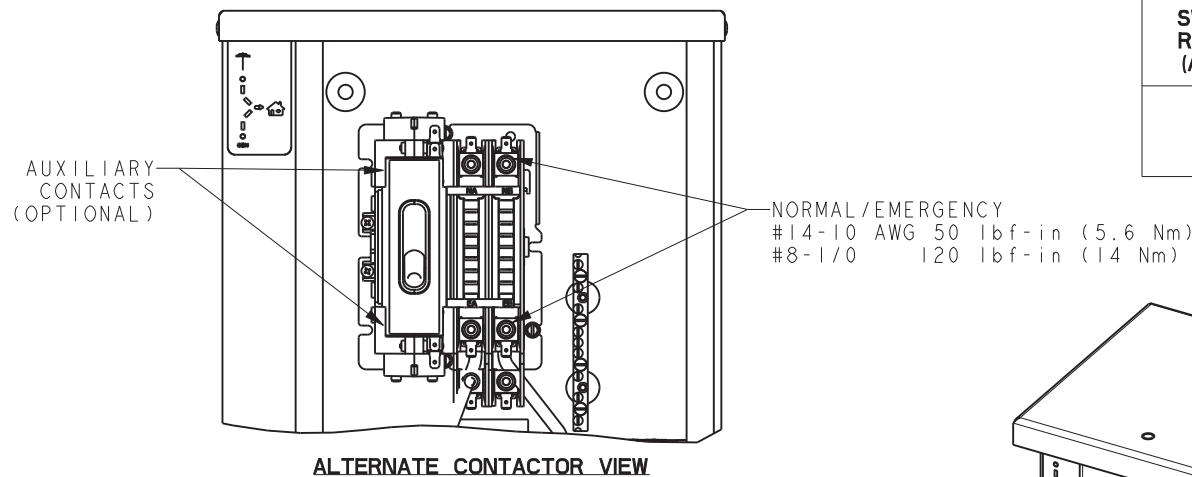


A: SCREW TYPE TERMINALS FOR EXTERNAL POWER CONNECTION			
SWITCH RATING (AMPS)	RANGE OF AL-CU WIRE SIZES		
	CONTACTOR (PER PHASE)	NEUTRAL	GROUND
100	(1) #14-1/0 AWG	(26) #4-14 AWG (2) 1/0-14 AWG (1) 2/0 AWG	(9) #14-#6 AWG (4) 1/0-#14 AWG



SQUARE D TYPE QO, QOA, QOC, QOP OR QOT (20A MAX. NON-CTL) BREAKERS
 SEE LOAD CENTER CHART BELOW FOR FURTHER INFORMATION
 (CIRCUIT BREAKERS NOT INCLUDED)

C: TORQUE		
	LARGE HOLE	SMALL HOLE
#14-10 AWG	35 lbf-in (4 Nm)	#14-10 AWG 15 lbf-in (1.7 Nm)
#8 AWG	40 lbf-in (4.5 Nm)	
#6-4 AWG	45 lbf-in (5.1 Nm)	
#2-1/0	50 lbf-in (5.6 Nm)	#8-6 AWG 25 lbf-in (2.8 Nm)

B: LOAD CENTER CHART INFORMATION			
SPACES	MAXIMUM NUMBER OF SINGLE POLE CIRCUITS	MAIN TERMINAL SIZE AWG	NUMBER OF BRANCH NEUTRAL TERMINALS
		Al or Cu (75 °C)	
16	24	6-2/0	29

100A MODEL RXT LOAD CENTER TYPE 3R ENCL

DIMENSION IN [] ARE INCHES.
 FINISH: ANSI 49 GRAY
 REFER TO OPERATOR'S MANUAL PRIOR TO INSTALLATION AND OPERATION OF UNIT.
 APPROXIMATE WEIGHT 8 Kg (18 LBS.)

REV	DATE	ON COMPOSITE DWGS. SEE PART NO. FOR REVISION LEVEL	BY	UNLESS OTHERWISE SPECIFIED - 1) DIMENSIONS ARE IN MILLIMETERS 2) TOLERANCES ARE:	APPROVALS	DATE	TITLE
-	11-26-19	NEW DRAWING [CT199910]	ZHK	X.XX ± 0.25 X.X ± 1.0 X ± 1.5 ANGLES ± 0° 30' MAX.		11-21-19	KOHLER CO. METRIC PRO-E POWER SYSTEMS, KOHLER, WI 53044 U.S.A. THIS DRAWING IN DESIGN AND DETAIL IS KOHLER CO. PROPERTY AND MUST NOT BE USED EXCEPT IN CONNECTION WITH KOHLER CO. WORK. ALL RIGHTS OF DESIGN OR INVENTION ARE RESERVED. DIMENSION PRINT, 100A RXT, 16 SP LC, N3R
				THIRD ANGLE PROJECTION		11-21-19	SCALE 0.40 CAD NO. SHEET 1 of 1
						11-21-19	DWG NO. ADV-9188