

ENCLOSURE INFORMATION	
KD700-750	kg [LBS]
ALUM. SOUND L2 ENCLOSURE WEIGHT	1510 [3300]
ALUM. SOUND L1 ENCLOSURE WEIGHT	1240 [2730]

TANK INFORMATION				
LITERS [GALLONS] MIN HOURS	GENSETS	TANK WEIGHT kg [LBS] (NO FUEL)	VERTICAL C.G. DIM A MM [INCH]	HORIZONTAL C.G. DIM B MM [INCH]
4829 [1275] 24 HOURS STANDARD	KD700-750	2520 [5556]	285 [11.2]	3045 [119.9]

NOTE:
TANK WEIGHT + ENCLOSURE WEIGHT + GENERATOR SET WEIGHT (REFERENCE FROM GENERATOR SET ADV) = TOTAL WEIGHT

KD700-750
SL1 / SL2 ENCLOSURE
STANDARD 24 HR TANK

REV	DATE	CHANGE NUMBER	ON COMPOSITE DWGS, SEE PART NO. FOR REVISION LEVEL □ INDICATES PART NUMBERS AFFECTED BY LATEST DRAWING REVISION	BY
A	04AUG2022	CT221497	NEW DRAWING	PAR
B	28FEB2023	CT225762	SEE SHEET 9,10 & 11	APB
C	14MAR2024	CT234393	(A-4) 1640.0 ADDED; SEE SHEET 2, 3 & 4	ASP

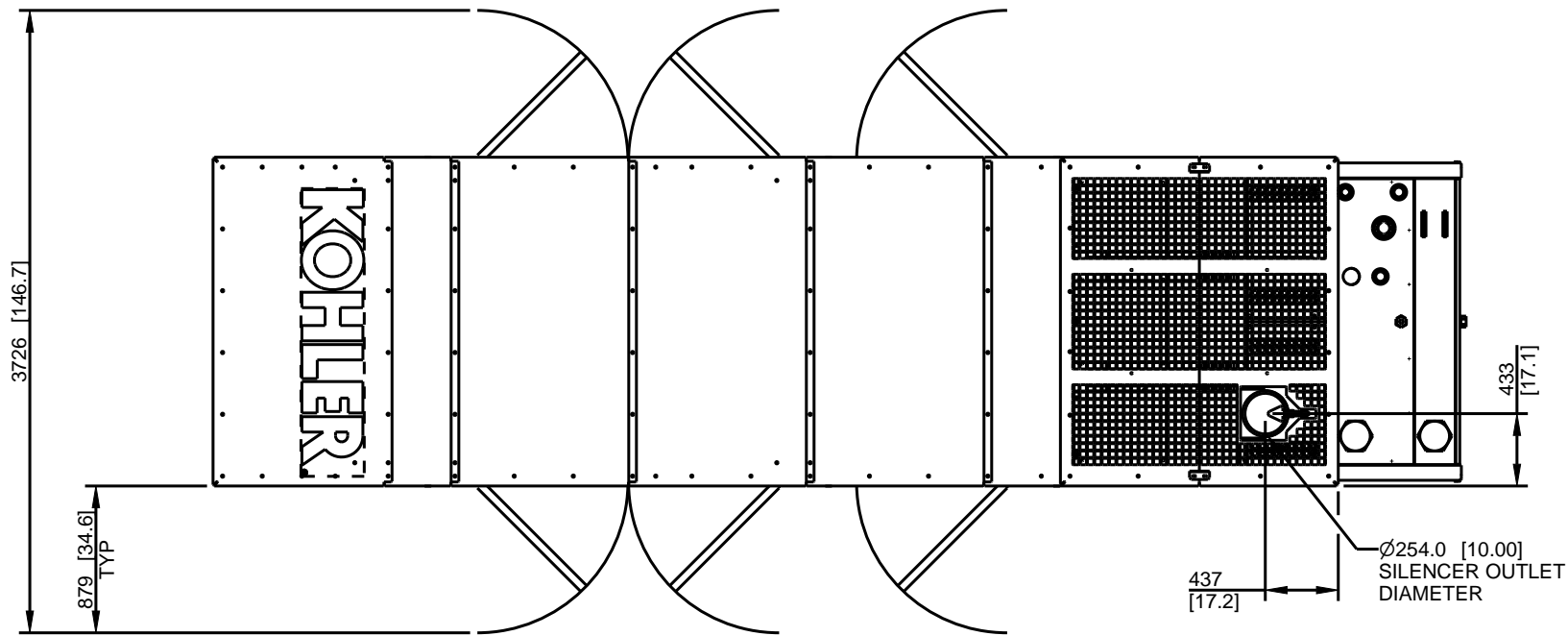
DO NOT SCALE.
THIS ASSEMBLY OR PART MUST
COMPLY WITH PEP-RML-001.
REFERENCE CAD MODEL FOR
UNSPECIFIED DIMENSIONS.

KOHLER
KOHLER, WISCONSIN 53044

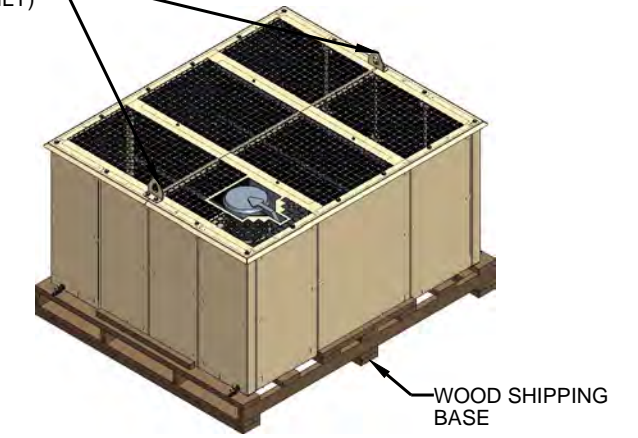
SCALE: 0.025 SHEET SIZE: B SHEET 1 OF 12

TITLE:
**DIMENSION PRINT KD700-750
TANK & ENCL.**

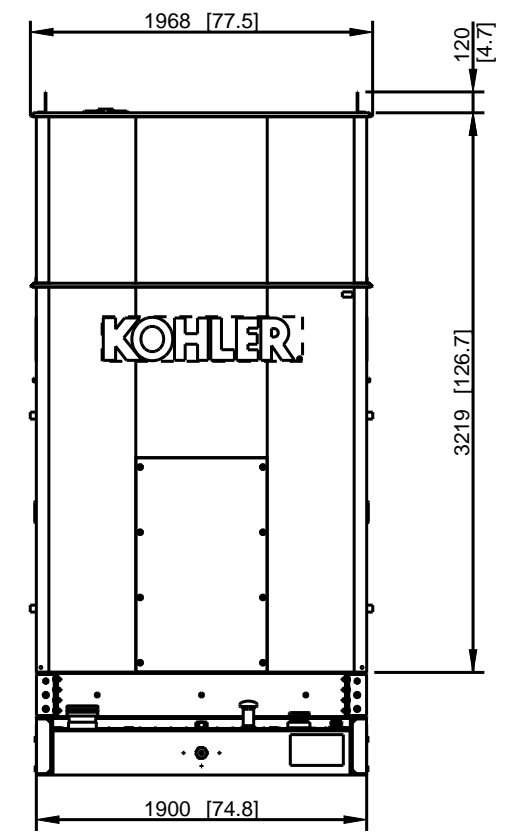
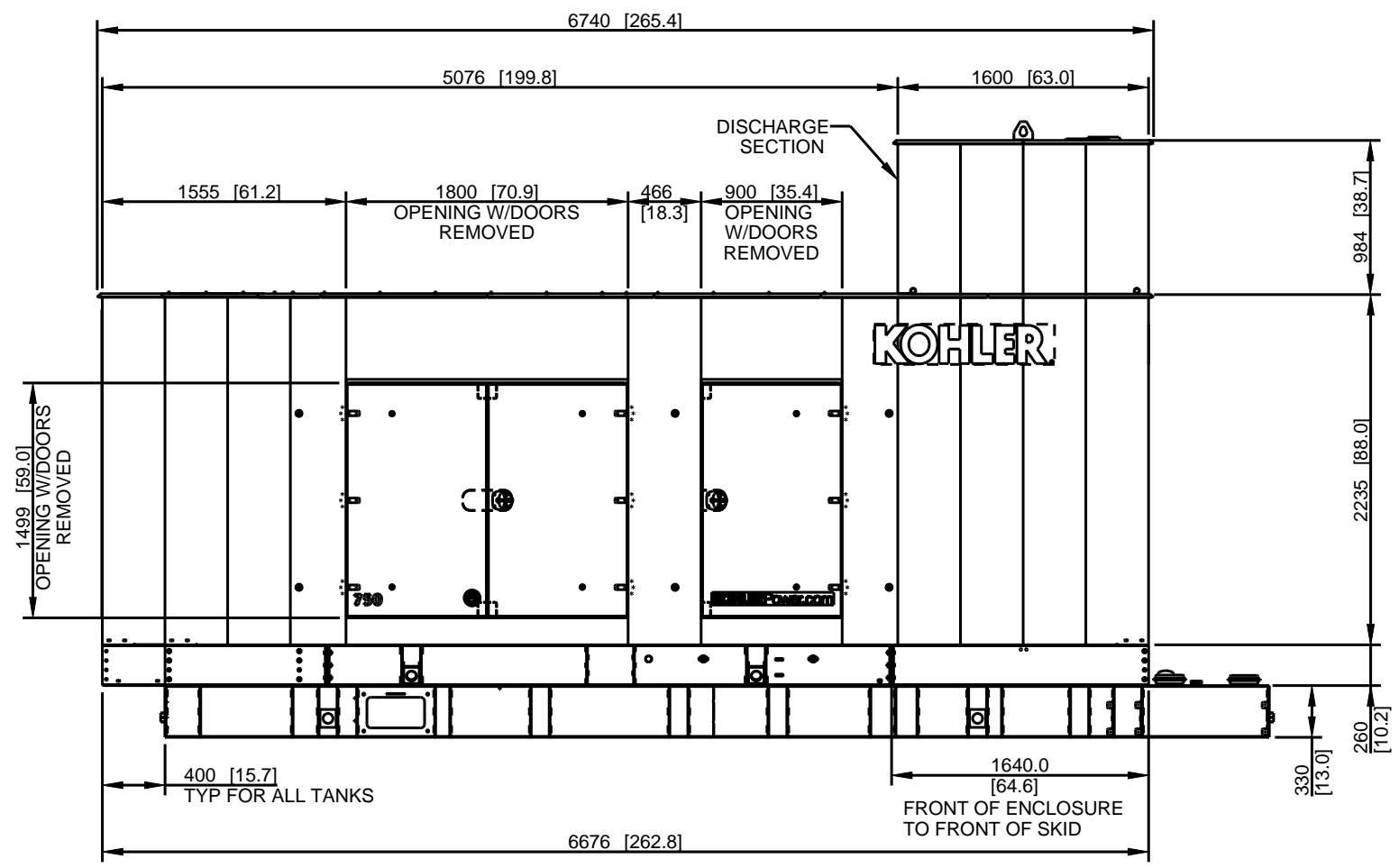
DWG NO.: **ADV-9222**



REMOVABLE LIFTING BRACKETS
(DISCHARGE SECTION ONLY)



DISCHARGE SECTION SHIP LOOSE



ENCLOSURE INFORMATION	
KD 700-750	kg [LBS]
ALUM. SOUND L3 DISCHARGE SECTION	150 [331]
ALUM. SOUND L3 ENCLOSURE WEIGHT W/DISCHARGE SECTION	1810 [3990]
ALUM. SOUND L3 ENCLOSURE WEIGHT W/O DISCHARGE SECTION	1660 [3660]

NOTE:
TANK WEIGHT + ENCLOSURE WEIGHT + GENERATOR SET WEIGHT
(REFERENCE FROM GENERATOR SET ADV) = TOTAL WEIGHT

KD700-750
SL3 ALUMINIUM
WITH DISCHARGE SECTION

REV	DATE	CHANGE NUMBER	DESCRIPTION	BY
A	04AUG2022	CT221497	NEW DRAWING	PAR
B	28FEB2023	CT225762	SEE SHEET 9,10 & 11	APB
C	14MAR2024	CT234393	(A-5) 1640.0 ADDED; SEE SHEET 1, 3 & 4	ASP

550 GALLON STATE TANK SHOWN

THIRD ANGLE PROJECTION

MAJOR = 0
CRITICAL = 0
CHARACTERISTICS COMPLY WITH KPS-80022

DRAWN BY: PAR
APPROVED BY: AJW
DATE: 04AUG2022

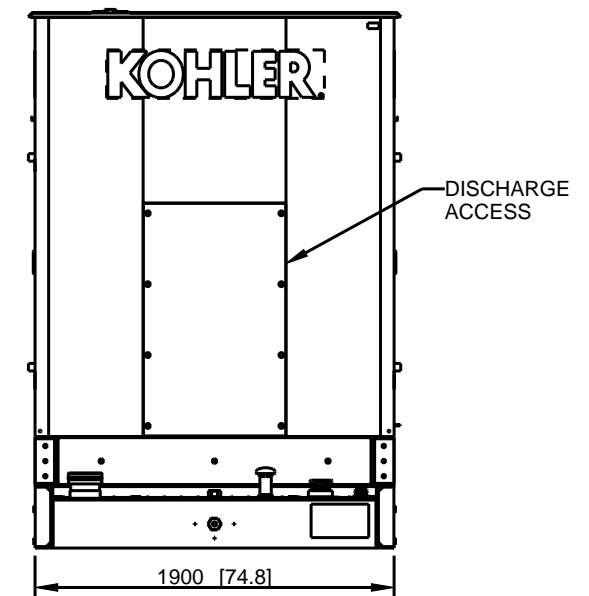
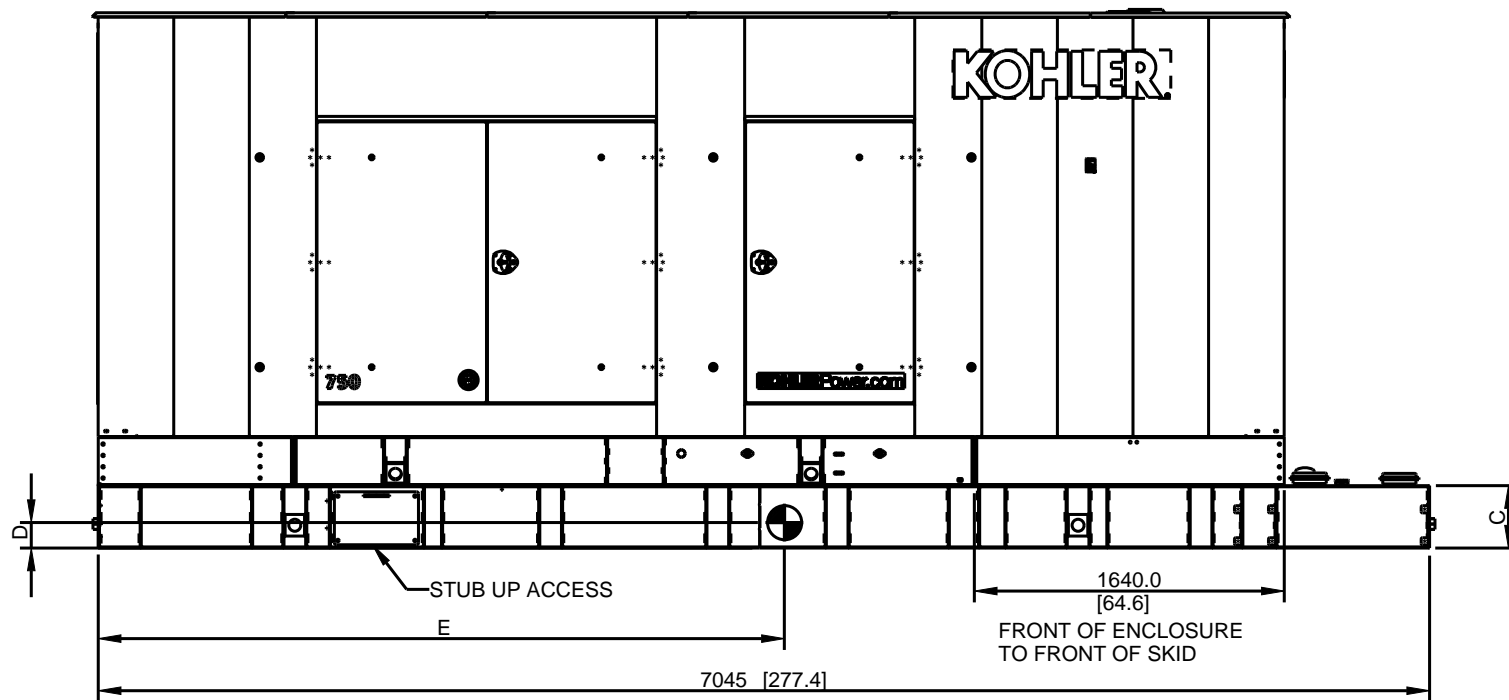
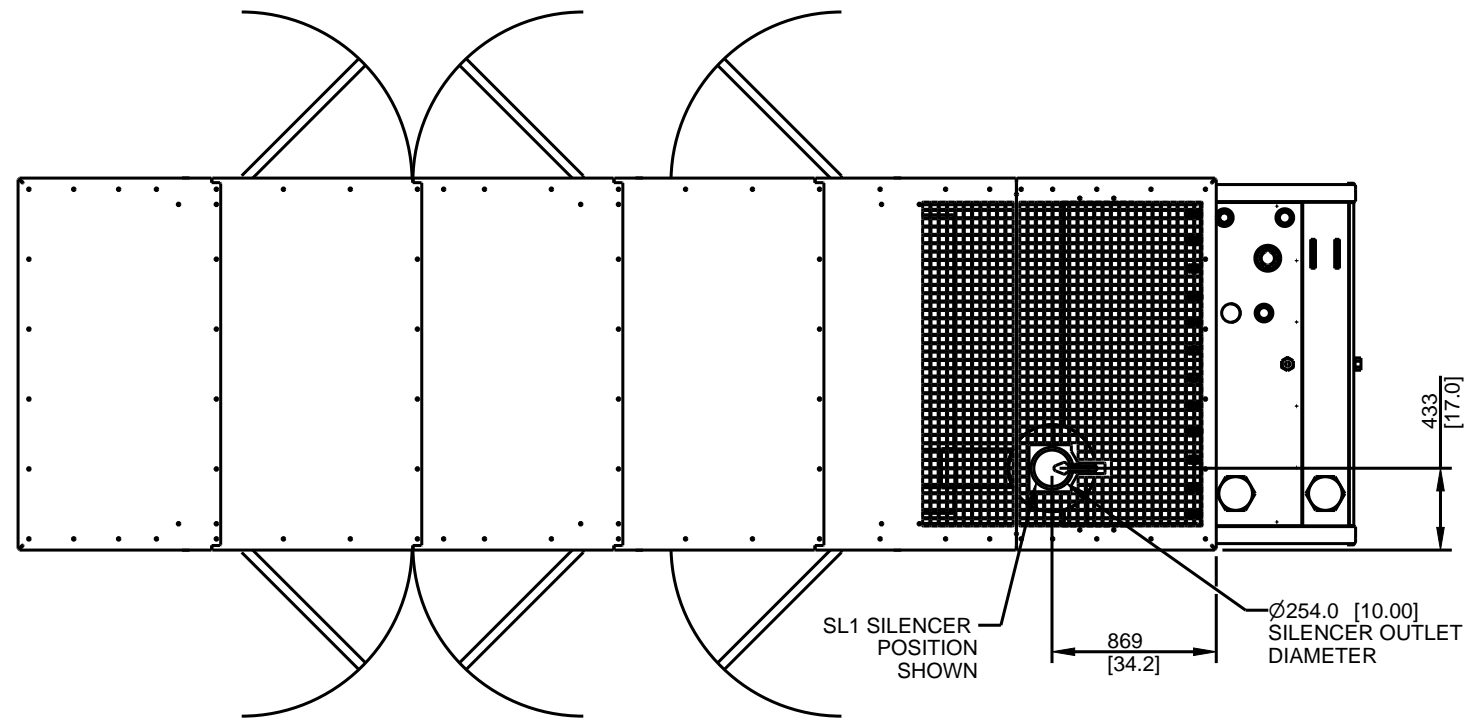
DO NOT SCALE.
THIS ASSEMBLY OR PART MUST COMPLY WITH PEP-RML-001.
REFERENCE CAD MODEL FOR UNSPECIFIED DIMENSIONS.



SCALE: 0.023 SHEET SIZE: B SHEET 2 OF 12

TITLE:
DIMENSION PRINT KD700-750
TANK & ENCL.

DWG NO.: ADV-9222



550 GALLON STATE TANK SHOWN

NOTE:
TANK WEIGHT + ENCLOSURE WEIGHT + GENERATOR SET WEIGHT
(REFERENCE FROM GENERATOR SET ADV) = TOTAL WEIGHT

TANK INFORMATION					
LITERS [GALLONS] MIN HOURS	GENSETS	DIM C MM [INCH]	TANK WEIGHT kg [LBS] (NO FUEL)	TANK VERTICAL C.G DIM D MM [INCH]	TANK HORIZONTAL C.G DIM E MM [INCH]
2081 [550] STATE	KD700-750	330 [13.0]	2140 [4718]	135 [5.3]	3630 [142.9]
4841 [1279] 24 HOUR STATE		610 [24.0]	2700 [5952]	270 [10.6]	3510 [138.2]

KD700-750
SL1 / SL2 ENCLOSURE
STATE 550 GAL &
24 HR TANK

REV	DATE	CHANGE NUMBER	ON COMPOSITE DWGS, SEE PART NO. FOR REVISION LEVEL □ INDICATES PART NUMBERS AFFECTED BY LATEST DRAWING REVISION	BY
A	04AUG2022	CT221497	NEW DRAWING	PAR
B	28FEB2023	CT225762	SEE SHEET 9,10 & 11	APB
C	14MAR2024	CT234393	(A-4) 1640.0 ADDED; SEE SHEET 1, 2 & 4	ASP

THIRD ANGLE PROJECTION

MAJOR = 0
CRITICAL = 0
CHARACTERISTICS COMPLY WITH KPS-80022

DRAWN BY: PAR
APPROVED BY: AJW

DATE: 04AUG2022

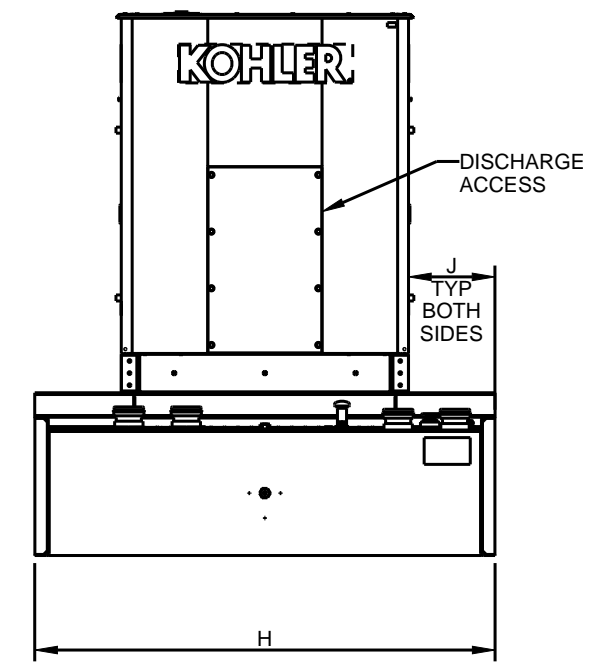
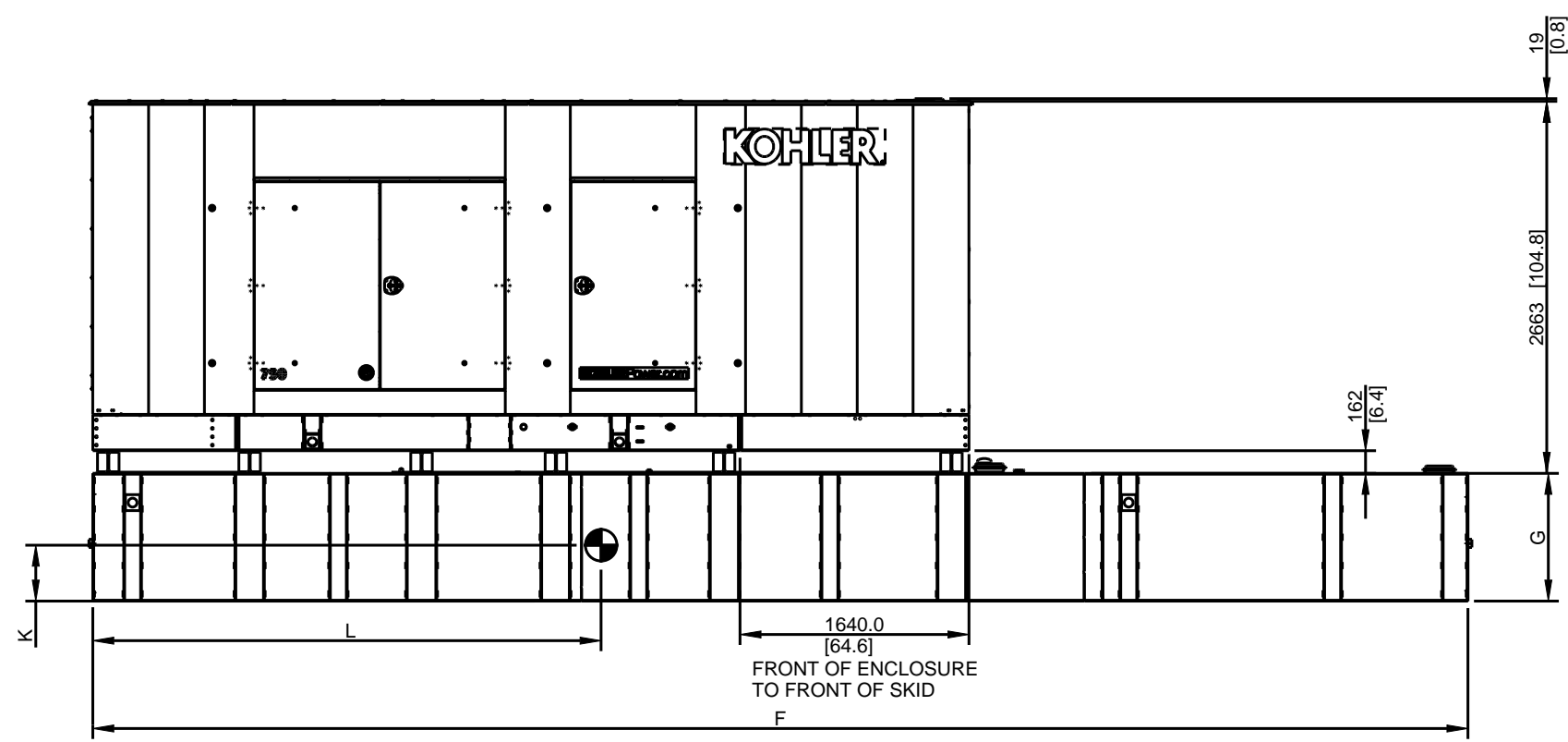
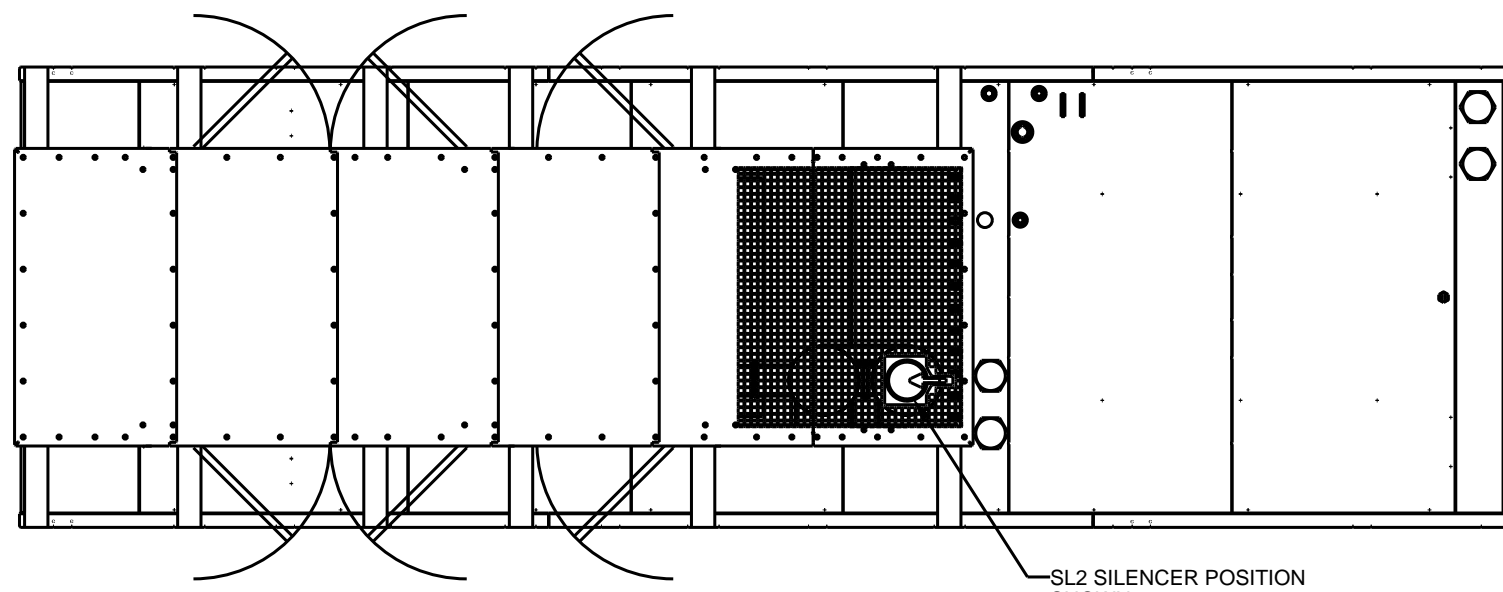
DO NOT SCALE. THIS ASSEMBLY OR PART MUST COMPLY WITH PEP-RML-001. REFERENCE CAD MODEL FOR UNSPECIFIED DIMENSIONS.

KOHLER.
KOHLER, WISCONSIN 53044

SCALE: 0.025 | SHEET SIZE: B | SHEET 3 OF 12

TITLE:
DIMENSION PRINT KD700-750
TANK & ENCL.

DWG NO.: **ADV-9222**



5025 GALLON 96 HR. STATE TANK SHOWN

NOTE:
TANK WEIGHT + ENCLOSURE WEIGHT + 2X ENCLOSURE I-BEAM SUPPORTS (110KG EACH, 220KG TOTAL) + GENERATOR SET WEIGHT (REFERENCE FROM GENERATOR SET ADV) = TOTAL WEIGHT

KD700-750
SL1 / SL2 ENCLOSURE
STANDARD 48 HR TANK,
STATE 48 / 72 / 96 HR TANK

TANK INFORMATION								
LITERS [GALLONS] MIN HOURS	GENSETS	DIM F MM [INCH]	DIM G MM [INCH]	DIM H MM [INCH]	DIM J MM [INCH]	TANK WEIGHT kg [LBS] (NO FUEL)	VERTICAL C.G DIM K MM [INCH]	HORIZONTAL C.G DIM L MM [INCH]
9577 [2530] 48 HOURS STATE	KD700-750	7045 [277.4]	787 [31.0]	2590 [102.0]	345 [13.6]	4800 [10582]	380 [15.0]	3400 [133.9]
9539 [2520] 48 HOURS STANDARD		6280 [247.2]	838 [33.0]	2590 [102.0]	345 [13.6]	4260 [9392]	420 [16.5]	2940 [115.7]
14327 [3785] 72 HOURS STATE		7500 [295.3]	914 [36.0]	3045 [119.9]	573 [22.5]	6050 [13338]	440 [17.3]	3600 [141.7]
19021 [5025] 96 HOURS STATE		9850 [387.8]	914 [36.0]	3045 [119.9]	573 [22.5]	7440 [16402]	420 [16.5]	4740 [186.6]

REV	DATE	CHANGE NUMBER	DESCRIPTION	BY
A	04AUG2022	CT221497	NEW DRAWING	PAR
B	28FEB2023	CT225762	SEE SHEET 9,10 & 11	APB
C	14MAR2024	CT234393	(B-5) 1640.0 ADDED; SEE SHEET 1, 2 & 3	ASP

THIRD ANGLE PROJECTION

MAJOR \odot = 0
CRITICAL \bullet = 0
CHARACTERISTICS COMPLY WITH KPS-80022

DRAWN BY: PAR
APPROVED BY: AJW
DATE: 04AUG2022

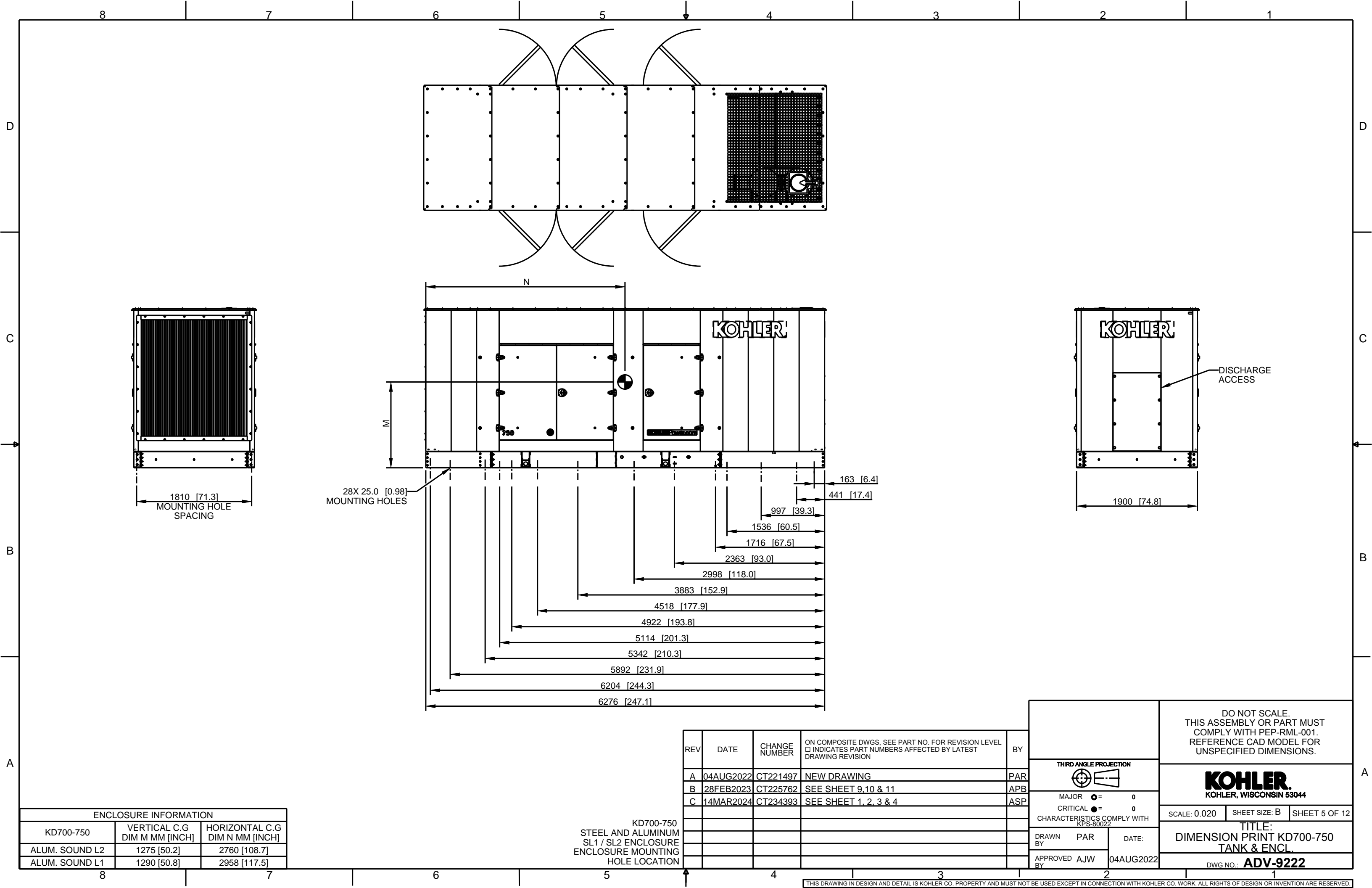
DO NOT SCALE.
THIS ASSEMBLY OR PART MUST COMPLY WITH PEP-RML-001. REFERENCE CAD MODEL FOR UNSPECIFIED DIMENSIONS.

KOHLER.
KOHLER, WISCONSIN 53044

SCALE: 0.020 SHEET SIZE: B SHEET 4 OF 12

TITLE:
DIMENSION PRINT KD700-750 TANK & ENCL.

DWG NO.: **ADV-9222**



ENCLOSURE INFORMATION		
KD700-750	VERTICAL C.G DIM M MM [INCH]	HORIZONTAL C.G DIM N MM [INCH]
ALUM. SOUND L2	1275 [50.2]	2760 [108.7]
ALUM. SOUND L1	1290 [50.8]	2958 [117.5]

KD700-750
STEEL AND ALUMINUM
SL1 / SL2 ENCLOSURE
ENCLOSURE MOUNTING
HOLE LOCATION

REV	DATE	CHANGE NUMBER	ON COMPOSITE DWGS, SEE PART NO. FOR REVISION LEVEL □ INDICATES PART NUMBERS AFFECTED BY LATEST DRAWING REVISION	BY
A	04AUG2022	CT221497	NEW DRAWING	PAR
B	28FEB2023	CT225762	SEE SHEET 9,10 & 11	APB
C	14MAR2024	CT234393	SEE SHEET 1, 2, 3 & 4	ASP

THIRD ANGLE PROJECTION

MAJOR = 0
CRITICAL = 0
CHARACTERISTICS COMPLY WITH KPS-80022

DRAWN BY: PAR
APPROVED BY: AJW
DATE: 04AUG2022

DO NOT SCALE.
THIS ASSEMBLY OR PART MUST COMPLY WITH PEP-RML-001.
REFERENCE CAD MODEL FOR UNSPECIFIED DIMENSIONS.

KOHLER.
KOHLER, WISCONSIN 53044

SCALE: 0.020 | SHEET SIZE: B | SHEET 5 OF 12

TITLE:
DIMENSION PRINT KD700-750
TANK & ENCL.

DWG NO.: **ADV-9222**

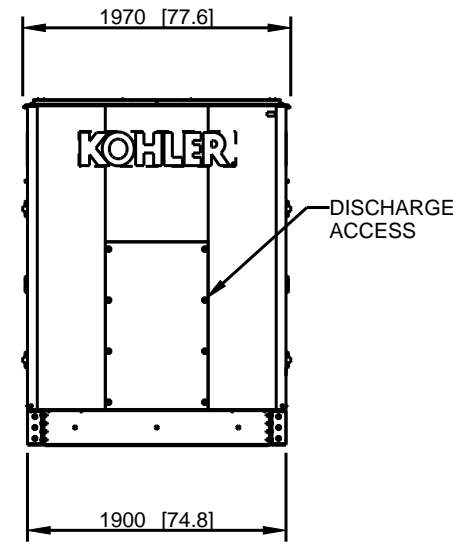
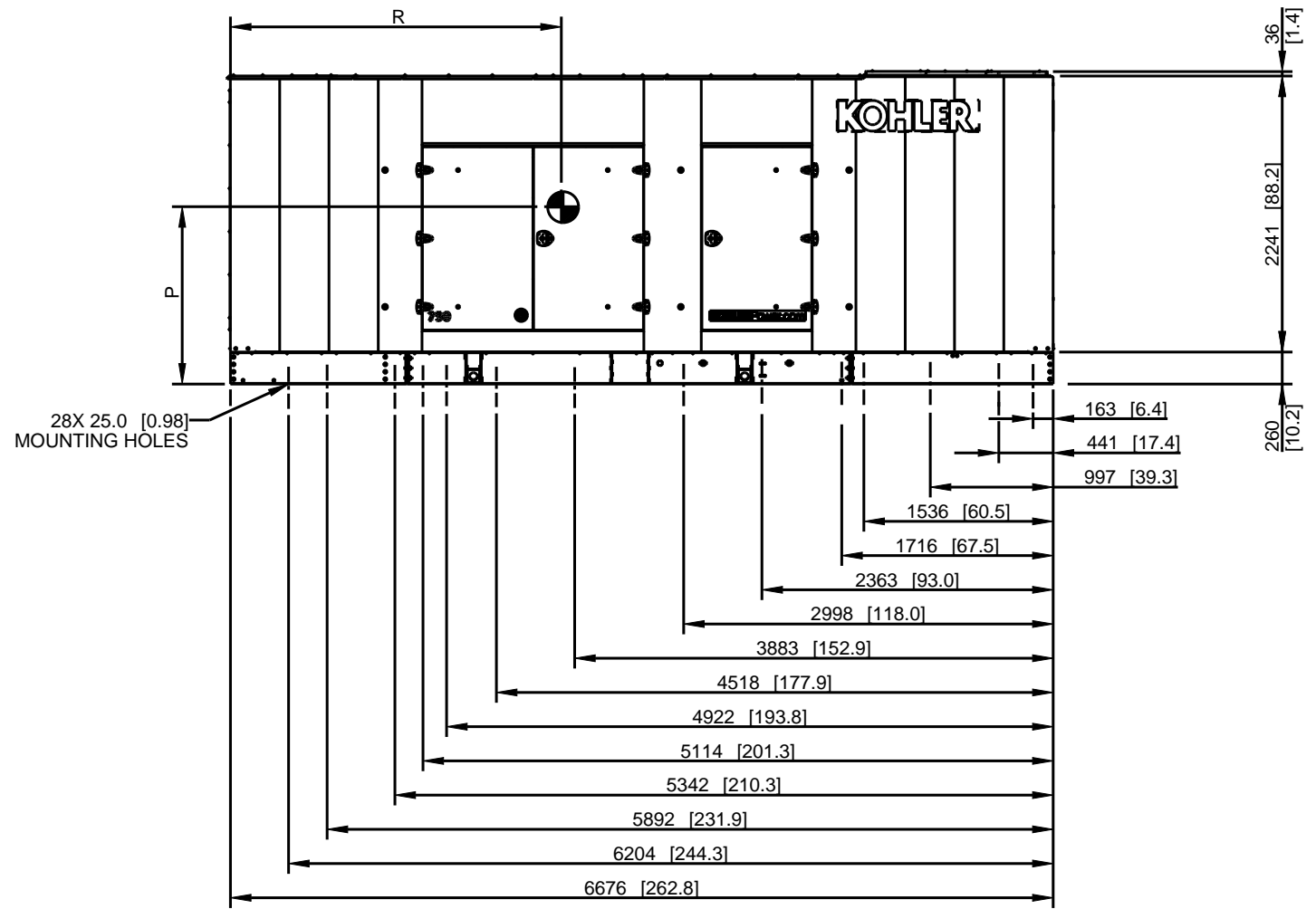
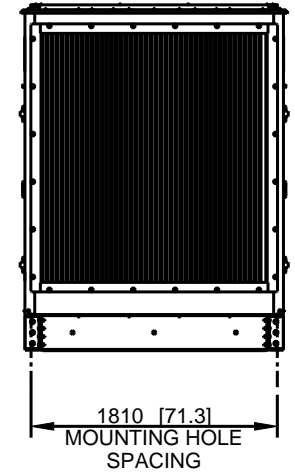
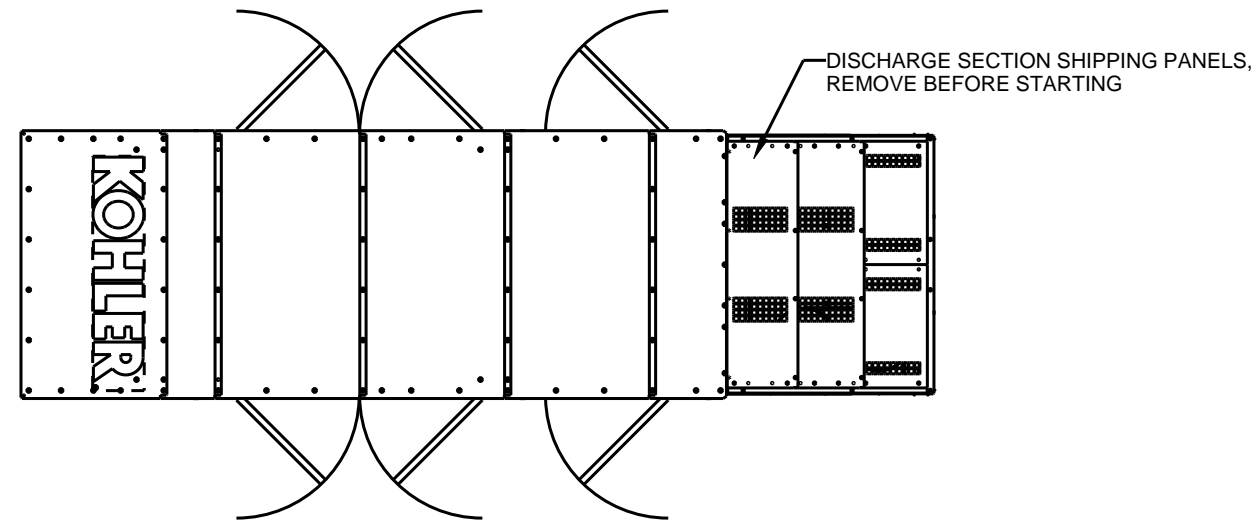
8 7 6 5 4 3 2 1

D

C

B

A



SL3 DISCHARGE SECTION NOT SHOWN

ENCLOSURE INFORMATION		
KD 700-750	VERTICAL C.G DIM P MM [INCH]	HORIZONTAL C.G DIM R MM [INCH]
ALUM. SOUND L3 ENCLOSURE WEIGHT W/DISCHARGE SECTION	1440 [56.7]	2685 [105.7]
ALUM. SOUND L3 ENCLOSURE WEIGHT W/O DISCHARGE SECTION	1290 [50.8]	2640 [103.9]

KD700-750
SL3 ALUMINIUM
WITHOUT DISCHARGE TOWER
ENCLOSURE MOUNTING
HOLE LOCATION

REV	DATE	CHANGE NUMBER	ON COMPOSITE DWGS, SEE PART NO. FOR REVISION LEVEL □ INDICATES PART NUMBERS AFFECTED BY LATEST DRAWING REVISION	BY
A	04AUG2022	CT221497	NEW DRAWING	PAR
B	28FEB2023	CT225762	SEE SHEET 9,10 & 11	APB
C	14MAR2024	CT234393	SEE SHEET 1, 2, 3 & 4	ASP

THIRD ANGLE PROJECTION

MAJOR ○ = 0
CRITICAL ● = 0
CHARACTERISTICS COMPLY WITH KPS-80022

DRAWN BY: PAR
APPROVED BY: AJW
DATE: 04AUG2022

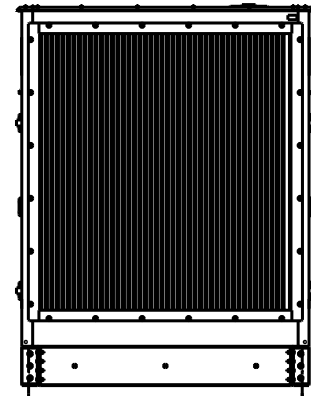
DO NOT SCALE. THIS ASSEMBLY OR PART MUST COMPLY WITH PEP-RML-001. REFERENCE CAD MODEL FOR UNSPECIFIED DIMENSIONS.

KOHLER.
KOHLER, WISCONSIN 53044

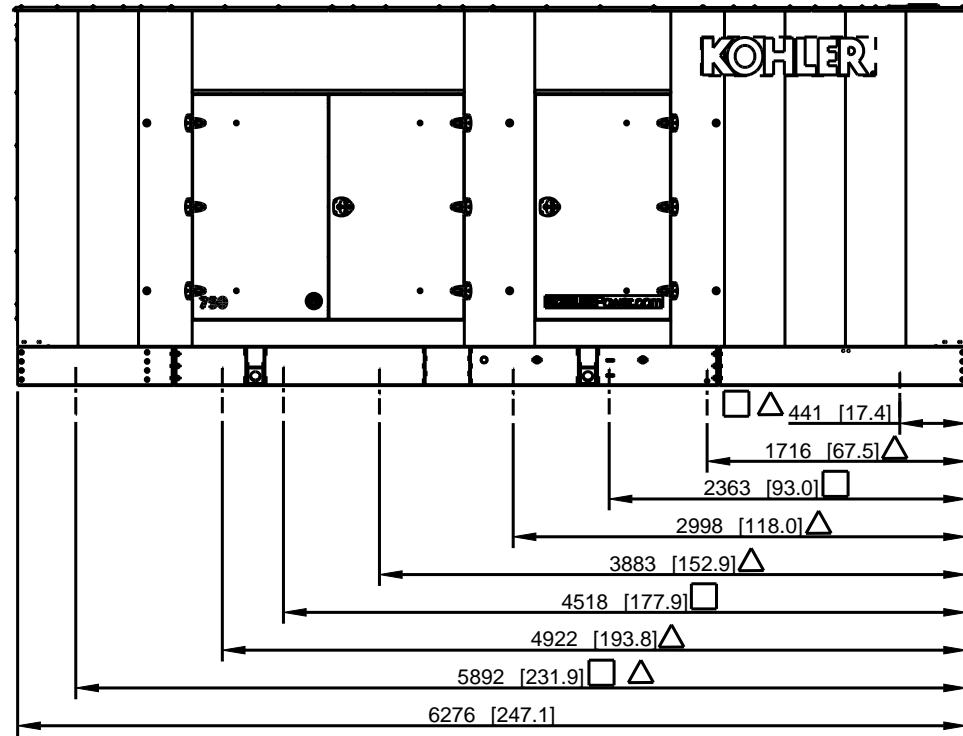
SCALE: 0.018 | SHEET SIZE: B | SHEET 6 OF 12

TITLE:
DIMENSION PRINT KD700-750
TANK & ENCL.

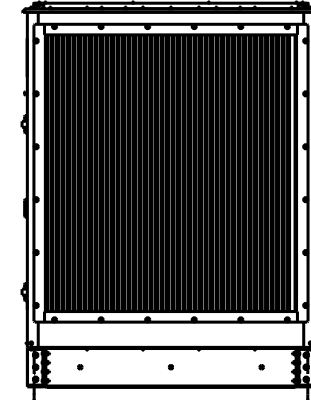
DWG NO.: **ADV-9222**



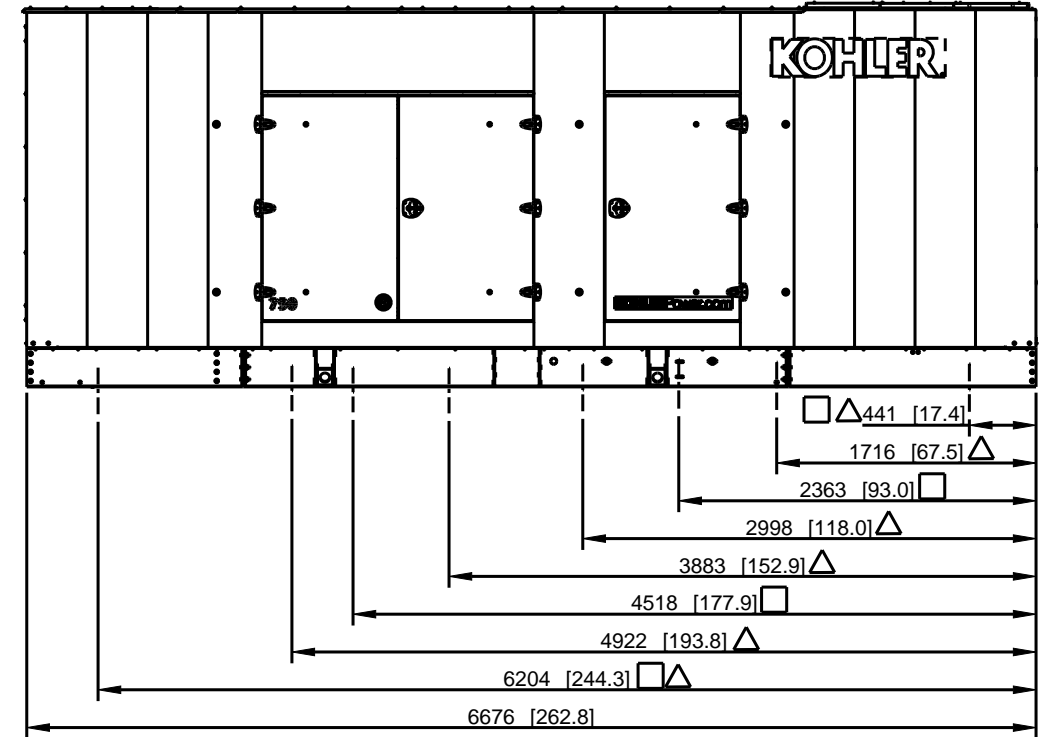
1810 [71.3]
MOUNTING HOLE
SPACING



SL1 / SL2 MOUNTING LOCATIONS



1810 [71.3]
MOUNTING HOLE
SPACING



SL3 MOUNTING LOCATIONS

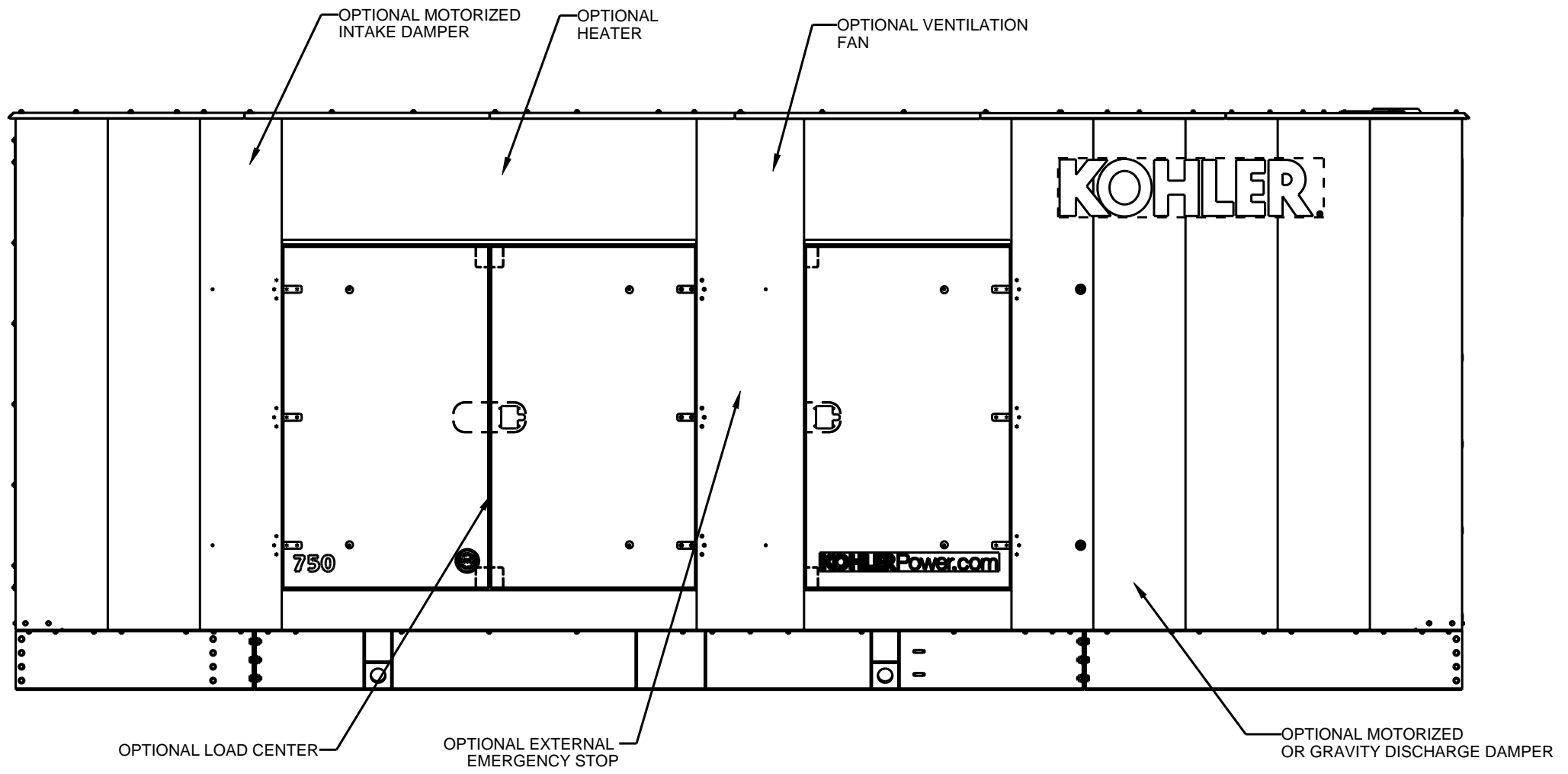
△ WINDLOAD / HURRICANE RATED ENCLOSURE MOUNT LOCATIONS

□ SEISMIC MOUNT LOCATIONS

REV	DATE	CHANGE NUMBER	ON COMPOSITE DWGS, SEE PART NO. FOR REVISION LEVEL □ INDICATES PART NUMBERS AFFECTED BY LATEST DRAWING REVISION	BY
A	04AUG2022	CT221497	NEW DRAWING	PAR
B	28FEB2023	CT225762	SEE SHEET 9,10 & 11	APB
C	14MAR2024	CT234393	SEE SHEET 1, 2, 3 & 4	ASP

THIRD ANGLE PROJECTION 			DO NOT SCALE. THIS ASSEMBLY OR PART MUST COMPLY WITH PEP-RML-001. REFERENCE CAD MODEL FOR UNSPECIFIED DIMENSIONS.
MAJOR	0	KOHLER. KOHLER, WISCONSIN 53044	
CRITICAL	0		SCALE: 0.020 SHEET SIZE: B SHEET 7 OF 12
CHARACTERISTICS COMPLY WITH KPS-80022			TITLE: DIMENSION PRINT KD700-750 TANK & ENCL.
DRAWN BY	PAR	DATE:	
APPROVED BY	AJW	04AUG2022	

KD700-750
SL1 / SL2 / SL3 CERTIFICATION
MOUNTING LOCATIONS



VIEWED FROM RIGHT SIDE, SL2 ENCLOSURE SHOWN WITH SIDE PANELS REMOVED FOR CLARITY

OPTIONAL AC & DC LED LIGHTS NOT SHOWN

REV	DATE	CHANGE NUMBER	ON COMPOSITE DWGS, SEE PART NO. FOR REVISION LEVEL □ INDICATES PART NUMBERS AFFECTED BY LATEST DRAWING REVISION	BY
A	04AUG2022	CT221497	NEW DRAWING	PAR
B	28FEB2023	CT225762	SEE SHEET 9,10 & 11	APB
C	14MAR2024	CT234393	SEE SHEET 1, 2, 3 & 4	ASP

THIRD ANGLE PROJECTION

MAJOR ● = 0
CRITICAL ● = 0
CHARACTERISTICS COMPLY WITH KPS-80022

DRAWN BY: PAR
APPROVED BY: AJW
DATE: 04AUG2022

DO NOT SCALE. THIS ASSEMBLY OR PART MUST COMPLY WITH PEP-RML-001. REFERENCE CAD MODEL FOR UNSPECIFIED DIMENSIONS.

KOHLER.
KOHLER, WISCONSIN 53044

SCALE: 0.040 | SHEET SIZE: B | SHEET 8 OF 12

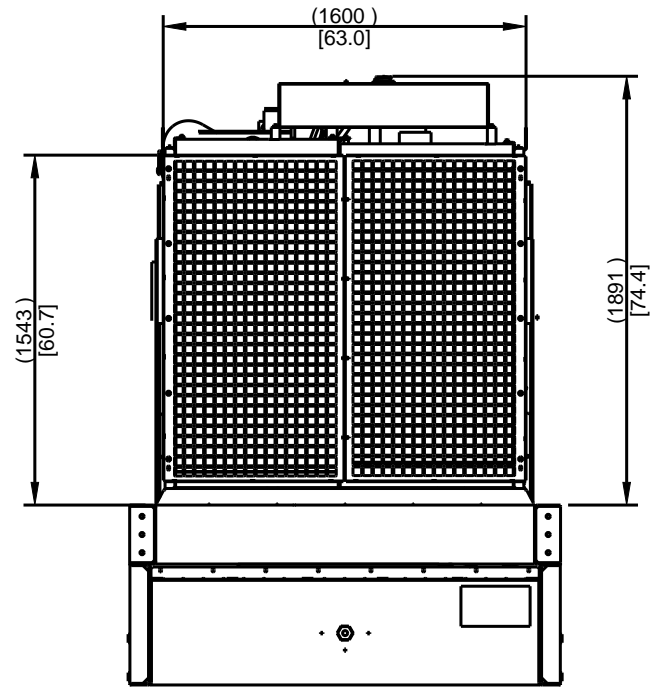
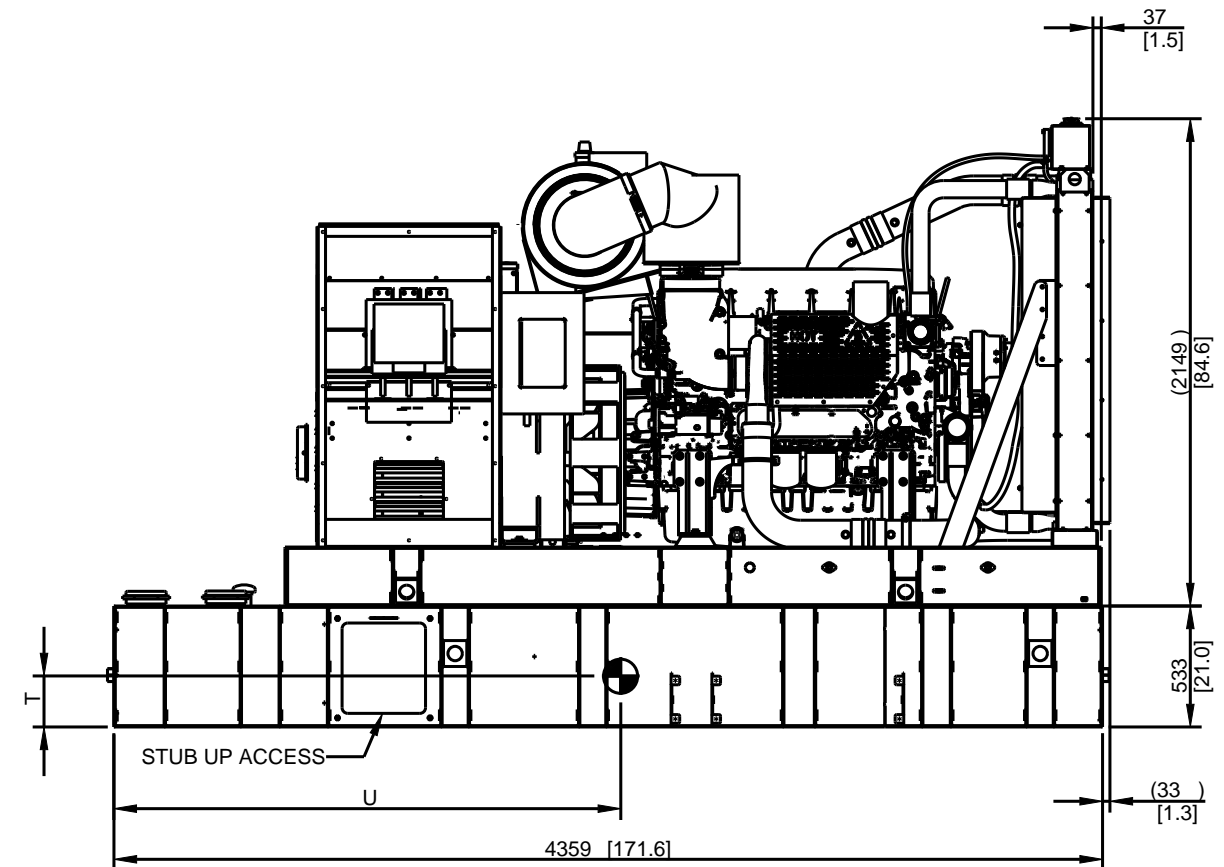
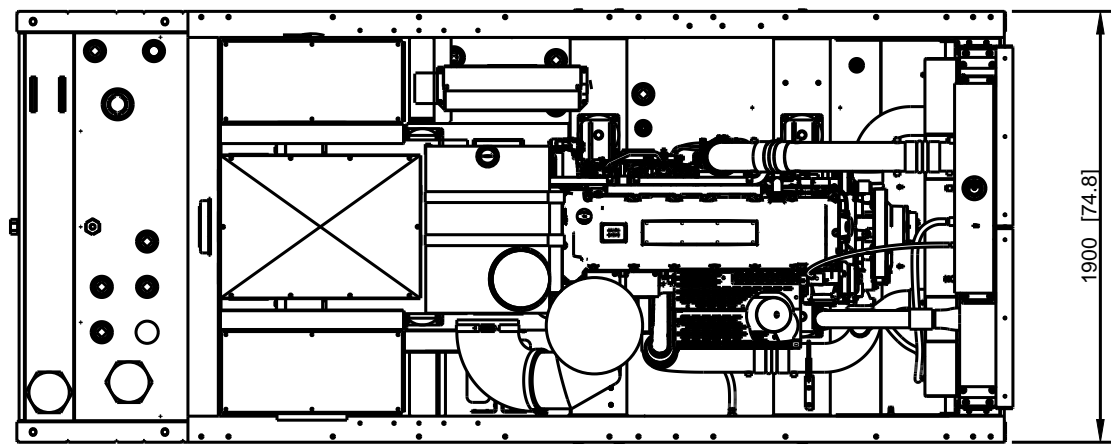
TITLE:
DIMENSION PRINT KD700-750 TANK & ENCL.

DWG NO.: **ADV-9222**

KD700-750
ELECTRICAL & ENCLOSURE
ACCESSORY OPTIONS

STUB UP ACCESS OPENING SIZE		
TANK*	WIDTH MM [INCH]	HEIGHT MM [INCH]
550 GALLON STATE	368 [14.5]	195 [7.7]
660 GALLON STATE	368 [14.5]	398 [15.7]
24 HOURS STANDARD	368 [14.5]	475 [18.7]
24 HOURS STATE	368 [14.5]	475 [18.7]

*AVAILABLE ONLY ON SKID WIDTH TANKS



REFERENCE GENERATOR SET ADV FOR GENERATOR DIMENSIONS

TANK INFORMATION				
LITERS [GALLONS] MIN HOURS	GENSETS	TANK WEIGHT kg [LBS] (NO FUEL)	VERTICAL C.G DIM T MM [INCH]	HORIZONTAL C.G DIM U MM [INCH]
2498 [660] STATE	KD700-750	1660 [3660]	225 [8.9]	2235 [88.0]

KD700-750
660 GALLON
STATE TANK
OPEN UNIT

REV	DATE	CHANGE NUMBER	DESCRIPTION	BY
A	04AUG2022	CT221497	NEW DRAWING	PAR
B	28FEB2023	CT225762	(A-8) 2498 [660] STATE WAS 2498 [660] GAL STATE TANK; (D-2) 550 GALLON STATE WAS 550 GALLON. 660 GALLON STATE WAS 660 GALLON. 24 HOURS STANDARD WAS 24 HOURS; SEE SHEET 10 & 11	APB
C	14MAR2024	CT234393	SEE SHEET 1, 2, 3 & 4	ASP

THIRD ANGLE PROJECTION

MAJOR = 0
CRITICAL = 0
CHARACTERISTICS COMPLY WITH KPS-80022

DRAWN BY: PAR
APPROVED BY: AJW
DATE: 04AUG2022

DO NOT SCALE. THIS ASSEMBLY OR PART MUST COMPLY WITH PEP-RML-001. REFERENCE CAD MODEL FOR UNSPECIFIED DIMENSIONS.

KOHLER.
KOHLER, WISCONSIN 53044

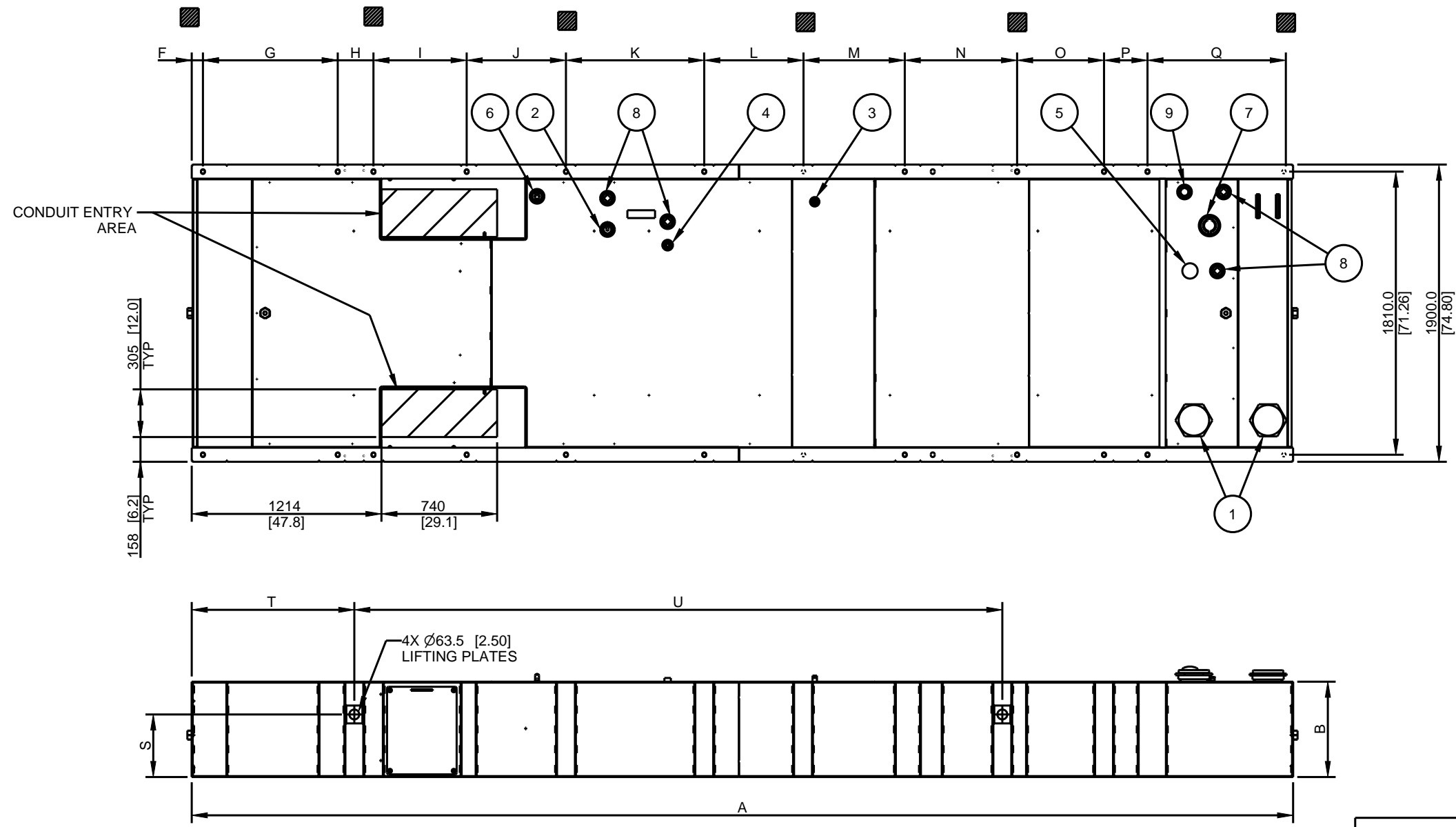
SCALE: 0.030 | SHEET SIZE: B | SHEET 9 OF 12

TITLE:
DIMENSION PRINT KD700-750 TANK & ENCL.

DWG NO.: **ADV-9222**

TANK INFORMATION														
LITERS [GALLONS] MIN HOURS	DIM A MM [INCH]	DIM B MM [INCH]	DIM F MM [INCH]	DIM G MM [INCH]	DIM H MM [INCH]	DIM I MM [INCH]	DIM J MM [INCH]	DIM K MM [INCH]	DIM L MM [INCH]	DIM M MM [INCH]	DIM N MM [INCH]	DIM O MM [INCH]	DIM P MM [INCH]	DIM Q MM [INCH]
550 GALLON STATE	7045 [277.4]	330 [13.0]	72 [2.8]	862.3 [33.95]	228.4 [8.99]	596.3 [23.48]	635.0 [25.00]	884.6 [34.83]	635.0 [25.00]	647.7 [25.50]	718.5 [28.29]	556.0 [21.89]	278.0 [10.94]	872.6 [34.35]
24 HOURS STANDARD	6279 [247.2]	610 [24.0]	72 [2.8]	862.8 [33.97]	824.2 [32.45]	635.0 [25.00]	884.6 [34.83]	635.0 [25.00]	647.7 [25.50]	718.5 [28.29]	556.0 [21.89]	278.0 [10.94]	-	-
24 HOURS STATE	7045 [277.4]	610 [24.0]	72 [2.8]	862.3 [33.95]	228.4 [8.99]	596.3 [23.48]	635.0 [25.00]	884.6 [34.83]	635.0 [25.00]	647.7 [25.50]	718.5 [28.29]	556.0 [21.89]	278.0 [10.94]	872.6 [34.35]

TANK LIFT PLATE INFORMATION			
LITERS [GALLONS] MIN HOURS	DIM S MM [INCH]	DIM T MM [INCH]	DIM U MM [INCH]
550 GALLON STATE			4145 [163.2]
24 HOURS STANDARD	400 [15.7]	1040 [40.9]	3955 [155.7]
24 HOURS STATE			4145 [163.2]



9	GAUGE, FUEL LEVEL, DIRECT READ
8	PLUG, PIPE (2" NPT)
7	FILL CAP, 2" LOCKABLE W/PIPE RISER
6	SWITCH, FUEL IN BASIN TOP MTD, 2"
5	VENT, NORMAL
4	RETURN, FUEL (1/2" NPT)
3	SUPPLY, FUEL (1/2" NPT)
2	GAUGE, FUEL LEVEL, W/ SENDER
1	CAP, EMERGENCY VENT
ITEM	DESCRIPTION

REV	DATE	CHANGE NUMBER	ON COMPOSITE DWGS, SEE PART NO. FOR REVISION LEVEL □ INDICATES PART NUMBERS AFFECTED BY LATEST DRAWING REVISION	BY
A	04AUG2022	CT221497	NEW DRAWING	PAR
B	28FEB2023	CT225762	(D-8) 550 GALLON STATE WAS 2028 [550] STATE, 24 HOURS STANDARD WAS 4826 [1275] 24 HOURS. 24 HOURS STATE WAS 4826 [1275] 24 HOURS STATE. SEE SHEET 9 & 11	APB
C	14MAR2024	CT234393	SEE SHEET 1, 2, 3 & 4	ASP

DO NOT SCALE. THIS ASSEMBLY OR PART MUST COMPLY WITH PEP-RML-001. REFERENCE CAD MODEL FOR UNSPECIFIED DIMENSIONS.

KOHLER.
KOHLER, WISCONSIN 53044

SCALE: 0.030 SHEET SIZE: B SHEET 10 OF 12

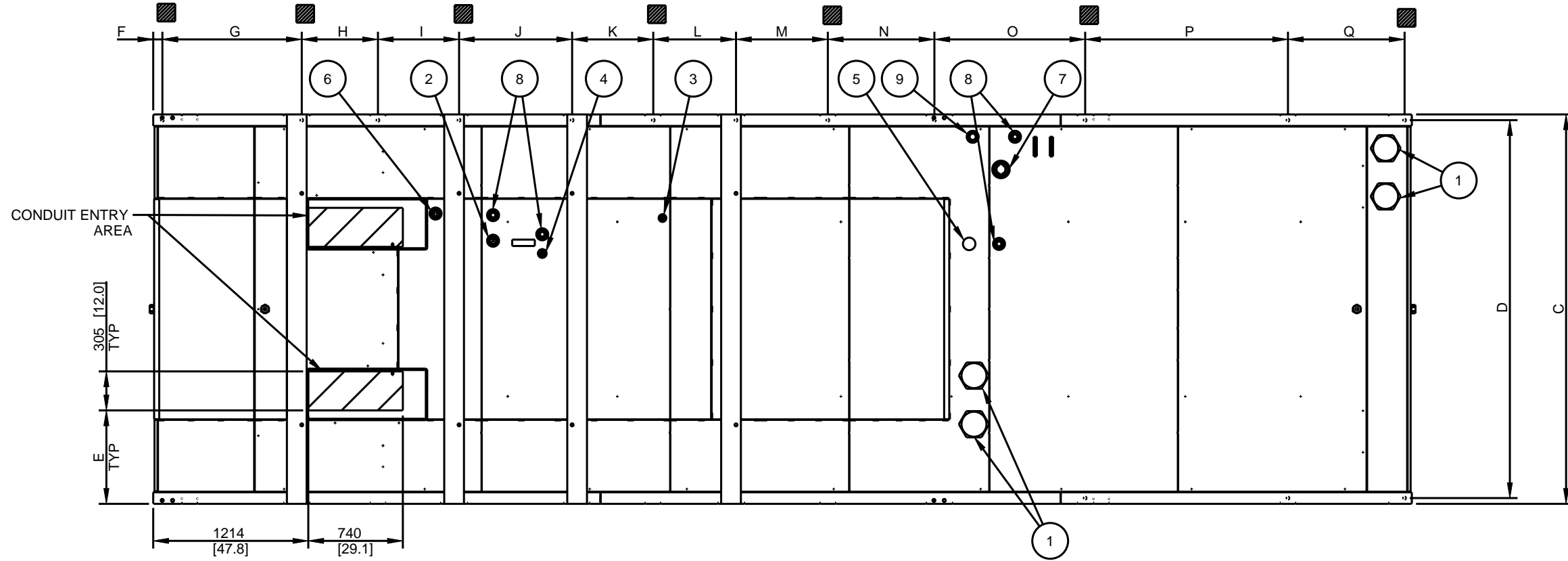
TITLE:
DIMENSION PRINT KD700-750 TANK & ENCL.

DWG NO.: **ADV-9222**

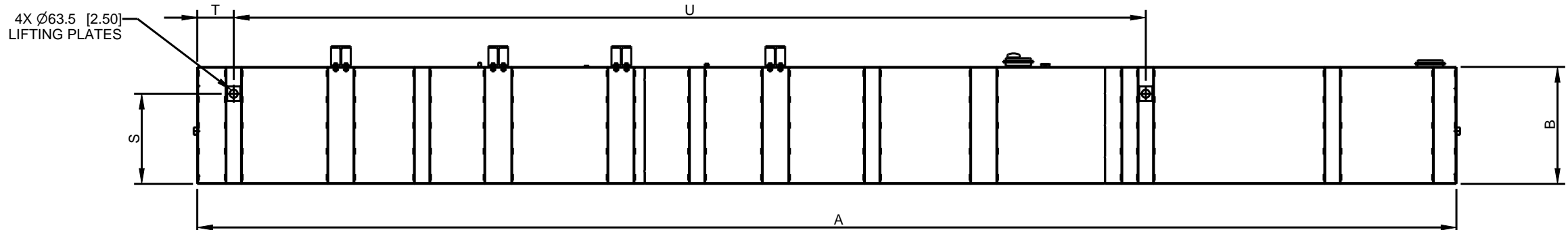
KD700-750
550 GALLON & 24 HOUR TANKS

TANK INFORMATION																	
LITERS [GALLONS] MIN HOURS	DIM A MM [INCH]	DIM B MM [INCH]	DIM C MM [INCH]	DIM D MM [INCH]	DIM E MM [INCH]	DIM F MM [INCH]	DIM G MM [INCH]	DIM H MM [INCH]	DIM I MM [INCH]	DIM J MM [INCH]	DIM K MM [INCH]	DIM L MM [INCH]	DIM M MM [INCH]	DIM N MM [INCH]	DIM O MM [INCH]	DIM P MM [INCH]	DIM Q MM [INCH]
48 HOURS STANDARD	6280 [247.2]	838 [33.0]	2590 [102]	2500.0 [98.43]	503 [19.8]	72 [2.8]	1090.7 [42.94]	596.3 [23.48]	635.0 [25.00]	884.6 [34.83]	635.0 [25.00]	647.7 [25.50]	718.5 [28.29]	834.0 [32.83]	-	-	-
48 HOURS STATE	7045 [277.4]	787 [31.0]	2590 [102]	2500.0 [98.43]	503 [19.8]	72 [2.8]	1090.7 [42.94]	596.3 [23.48]	635.0 [25.00]	884.6 [34.83]	635.0 [25.00]	647.7 [25.50]	718.5 [28.29]	834.0 [32.83]	872.6 [34.35]	-	-
72 HOURS STATE	7500 [295.3]	914 [36.0]	3045 [119.9]	2955.0 [116.34]	731 [28.8]	72 [2.8]	1090.7 [42.94]	596.3 [23.48]	635.0 [25.00]	884.6 [34.83]	635.0 [25.00]	647.7 [25.50]	718.5 [28.29]	834.0 [32.83]	1334.1 [52.52]	-	-
96 HOURS STATE	9850 [387.8]	914 [36.0]	3045 [119.9]	2955.0 [116.34]	731 [28.8]	72 [2.8]	1090.7 [42.94]	596.3 [23.48]	635.0 [25.00]	884.6 [34.83]	635.0 [25.00]	647.7 [25.50]	718.5 [28.29]	834.0 [32.83]	1180.0 [46.46]	1587.1 [62.48]	912.7 [35.93]

TANK LIFT PLATE INFORMATION			
LITERS [GALLONS] MIN HOURS	DIM S MM [INCH]	DIM T MM [INCH]	DIM U MM [INCH]
48 HOURS STANDARD	705 [27.7]	285 [11.2]	5395 [212.4]
48 HOURS STATE		285 [11.2]	5714 [225.0]
72 HOURS STATE		285 [11.2]	6015 [236.8]
96 HOURS STATE		285 [11.2]	7135 [280.9]



9	GAUGE, FUEL LEVEL, DIRECT READ
8	PLUG, PIPE (2" NPT)
7	FILL CAP, 2" LOCKABLE W/PIPE RISER
6	SWITCH, FUEL IN BASIN TOP MTD, 2"
5	VENT, NORMAL
4	RETURN, FUEL (1/2" NPT)
3	SUPPLY, FUEL (1/2" NPT)
2	GAUGE, FUEL LEVEL, W/ SENDER
1	CAP, EMERGENCY VENT
ITEM	DESCRIPTION



GROUND CLEARANCE I-BEAM MOUNTING HOLE

5025 GALLON 96 HOURS STATE TANK SHOWN

REV	DATE	CHANGE NUMBER	ON COMPOSITE DWGS, SEE PART NO. FOR REVISION LEVEL □ INDICATES PART NUMBERS AFFECTED BY LATEST DRAWING REVISION	BY
A	04AUG2022	CT221497	NEW DRAWING	PAR
B	28FEB2023	CT225762	(D-8) 48 HOURS STANDARD WAS 9210 [2433] 48 HOURS, 48 HOURS STATE WAS 9210 [2433] 48 HOURS STATE, 72 HOURS STATE WAS 13813 [3649] 72 HOURS STATE, 96 HOURS STATE WAS 18416 [4865] 96 HOURS STATE: SEE SHEET 9 & 10	APB
C	14MAR2024	CT234393	SEE SHEET 1, 2, 3 & 4	ASP

THIRD ANGLE PROJECTION

MAJOR = 0
CRITICAL = 0
CHARACTERISTICS COMPLY WITH KPS-80022

DRAWN BY: PAR
APPROVED BY: AJW
DATE: 04AUG2022

DO NOT SCALE. THIS ASSEMBLY OR PART MUST COMPLY WITH PEP-RML-001. REFERENCE CAD MODEL FOR UNSPECIFIED DIMENSIONS.

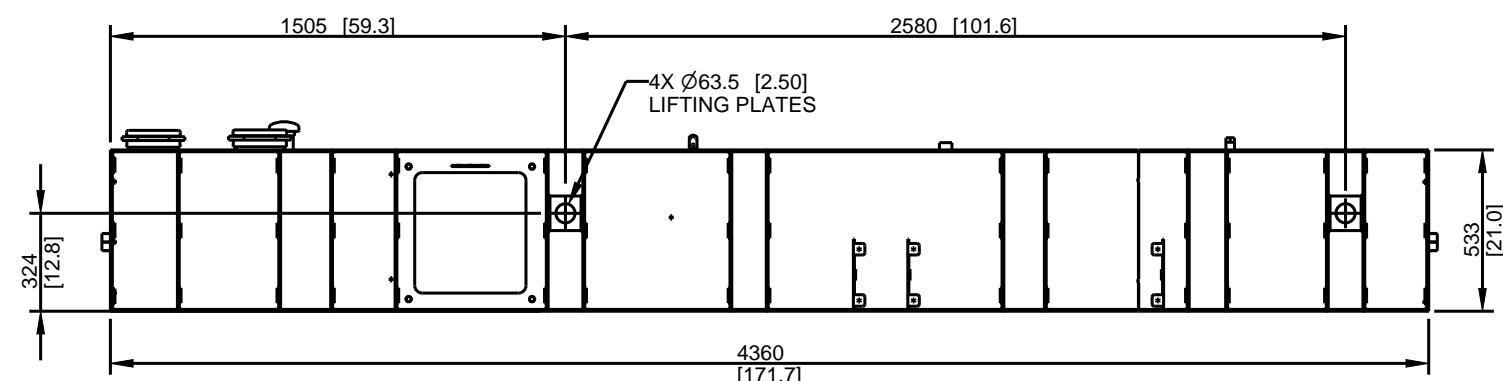
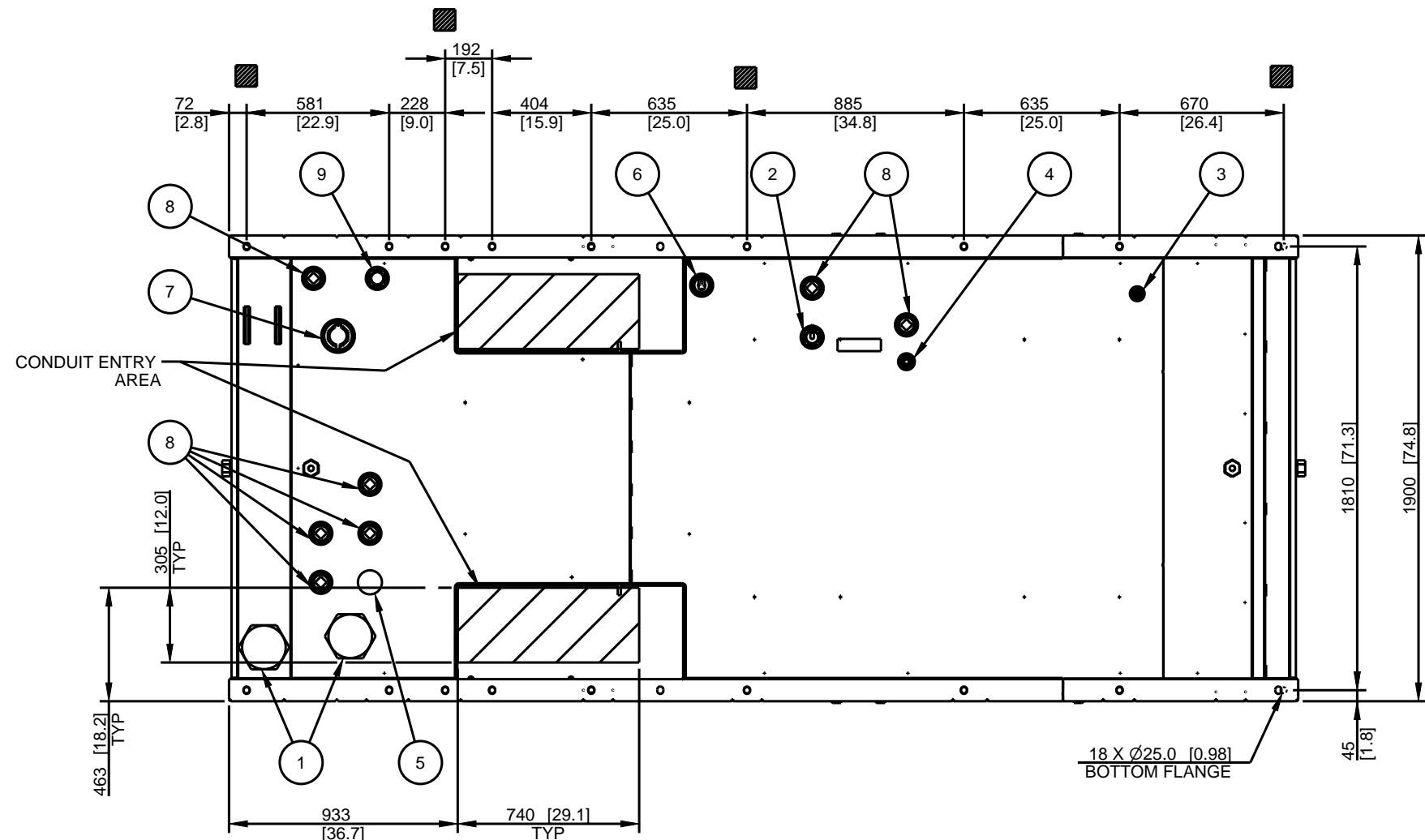
KOHLER.
KOHLER, WISCONSIN 53044

SCALE: 0.025 | SHEET SIZE: B | SHEET 11 OF 12

TITLE:
DIMENSION PRINT KD700-750 TANK & ENCL.

DWG NO.: **ADV-9222**

KD700-750
48 HR TANKS & 72 / 96 HR STATE TANKS



9	GAUGE, FUEL LEVEL, DIRECT READ
8	PLUG, PIPE (2" NPT)
7	FILL CAP, 2" LOCKABLE W/PIPE RISER
6	SWITCH, FUEL IN BASIN TOP MTD, 2"
5	VENT, NORMAL
4	RETURN, FUEL (1/2" NPT)
3	SUPPLY, FUEL (1/2" NPT)
2	GAUGE, FUEL LEVEL, W/ SENDER
1	CAP, EMERGENCY VENT
ITEM	DESCRIPTION

660 GALLONS STATE TANK SHOWN
 GROUND CLEARANCE I-BEAM MOUNTING HOLE

KD700-750
 NON ENCLOSED UNIT ONLY TANK
 660 GALLON STATE TANK

REV	DATE	CHANGE NUMBER	DESCRIPTION	BY
A	04AUG2022	CT221497	NEW DRAWING	PAR
B	28FEB2023	CT225762	SEE SHEET 9,10 & 11	APB
C	14MAR2024	CT234393	SEE SHEET 1, 2, 3 & 4	ASP

THIRD ANGLE PROJECTION

MAJOR = 0
 CRITICAL = 0
 CHARACTERISTICS COMPLY WITH KPS-80022

DRAWN BY: PAR
 APPROVED BY: AJW
 DATE: 04AUG2022

DO NOT SCALE. THIS ASSEMBLY OR PART MUST COMPLY WITH PEP-RML-001. REFERENCE CAD MODEL FOR UNSPECIFIED DIMENSIONS.

KOHLER.
 KOHLER, WISCONSIN 53044

SCALE: 0.040 | SHEET SIZE: B | SHEET 12 OF 12

TITLE:
 DIMENSION PRINT KD700-750 TANK & ENCL.

DWG NO.: **ADV-9222**