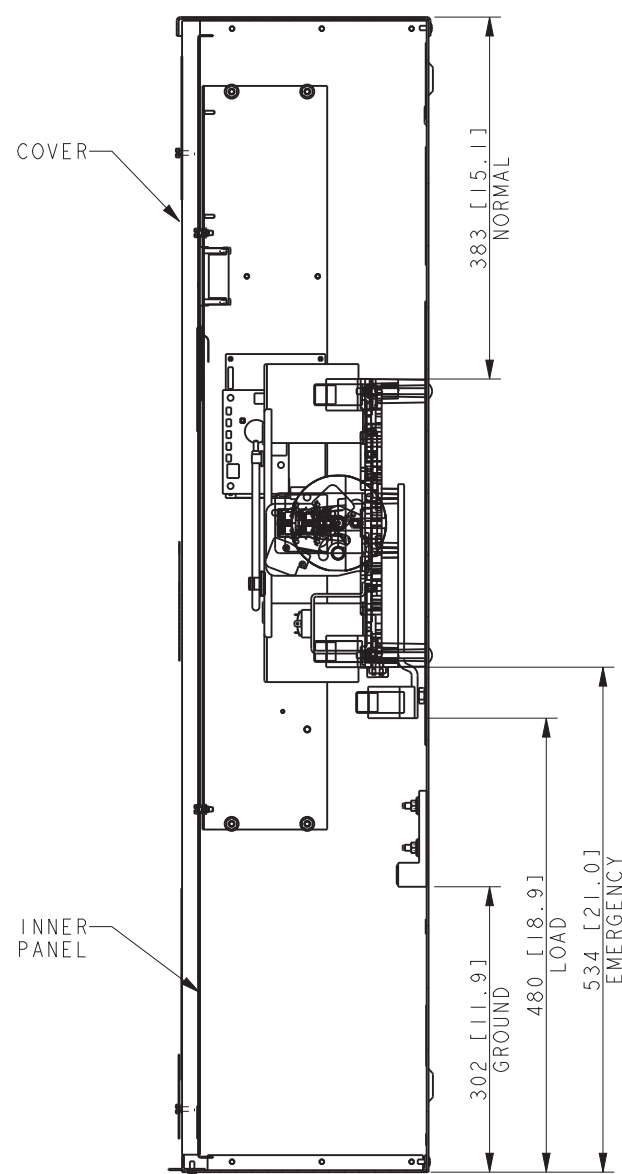
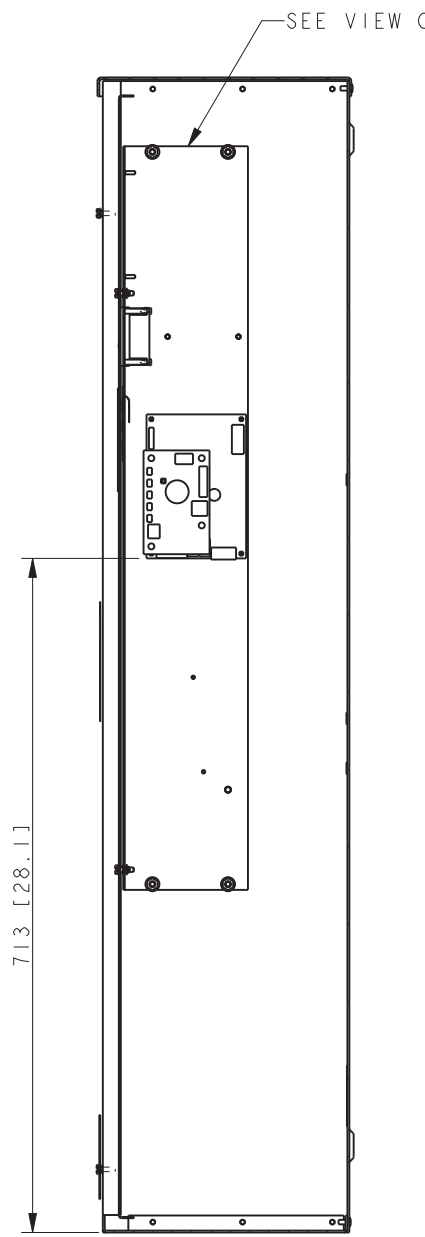


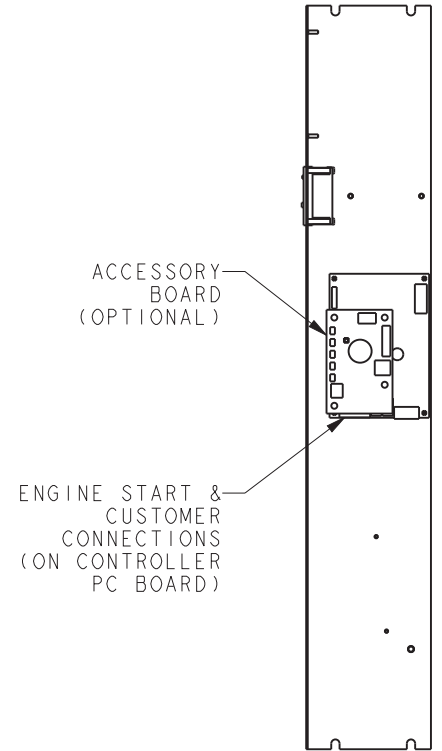
COVER & INNER PANEL REMOVED TO SHOW DETAIL



SECTION A-A



SECTION B-B



VIEW C

A. SCREW TYPE TERMINALS FOR EXTERNAL POWER CONNECTION			
SWITCH RATING (AMPS)	RANGE OF AL-CU WIRE SIZES		
	CONTACTOR (PER PHASE)	NEUTRAL	GROUND
400	(2) 1/0 to 250 KCMIL or (1) 4 AWG to 600 KCMIL	(6) 1/0 to 250 KCMIL or (3) 4 AWG to 600 KCMIL	(6) #6 TO 3/0 AWG
TORQUE	UP to 250 KCMIL 275 lbf-in (31.1 Nm) 300 to 600 KCMIL 500 lbf-in (56.5 Nm)	UP to 250 KCMIL 275 lbf-in (31.1 Nm) 300 to 600 KCMIL 500 lbf-in (56.5 Nm)	275 lbf-in (31.1 Nm)

MODEL R (MPAC 500)  
400A 1Ph  
STANDARD TRANSITION  
NEMA 3R

REV	DATE	ON COMPOSITE DWGS. SEE PART NO. FOR REVISION LEVEL	BY
-	2-19-21	NEW DRAWING [CT210077]	ZHK

UNLESS OTHERWISE SPECIFIED -	
1) DIMENSIONS ARE IN MILLIMETERS	2) TOLERANCES ARE:
X.XX ± 0.25	X.X ± 1.0
X ± 1.5	ANGLES ± 0° 30' MAX.
THIRD ANGLE PROJECTION	SURFACE FINISH
APPROVALS	DATE
DRAWN ZHK	2-15-21
CHECKED MTL	2-15-21
APPROVED MTL	2-15-21

**KOHLER CO.** METRIC PRO-E  
POWER SYSTEMS, KOHLER, WI 53044 U.S.A.  
THIS DRAWING IN DESIGN AND DETAIL IS KOHLER CO. PROPERTY AND MUST NOT BE USED EXCEPT IN CONNECTION WITH KOHLER CO. WORK. ALL RIGHTS OF DESIGN OR INVENTION ARE RESERVED.

TITLE: **DIMENSION PRINT**

SCALE: 0.25 CAD NO. SHEET 2 of 2  
DWG NO. **ADV-9769** **D**