

Areva

Ann Sacks' Areva collection employs two distinctive marble colorways in two patterns in both singular shades and a combination of marbles creatively laid-up to achieve an illusionary ombre effect. The Plank pattern is achieved by joining small rectangles together to form its length, while the mosaic is a complementing mix of small marble squares. The stones' natural shade variation and veining adds to each pattern's exceptional surface movement and dimensional depth.



2" x 8" Plank in Lilac and Lilac/Thassos

RECOMMENDED USE

- Suitable for all indoor wall and flooring applications
- Suitable for installation on shower floors and walls
- Outdoor use subject to climate and method of installation
- Suitable for outdoors in non-freeze thaw climates
- Please see Ann Sacks slip-resistance and wet flooring application statement to determine usage in a wet area



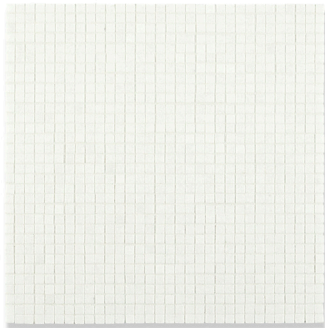
INSTALLATION AND MAINTENANCE

- Install per industry standards for natural stone
- It is recommended to seal natural stone with a penetrating sealer
- Periodic cleaning and resealing is recommended using products formulated for natural stone
- Always inspect material prior to installation — installed material cannot be accepted for return or credit

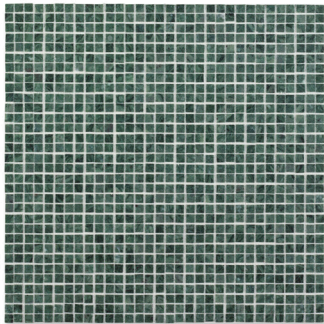
COLLECTION

Mosaic	Micro (Sheet: 8.465" x 8.465" x 0.393")
Plank	2" x 8" (1.693" x 7.283" x 0.393")
Material	Stone
Finish	Honed
Color	Lotus Green Lotus Green/Thassos Lilac Lilac/Thassos Thassos <i>Plank colorways can be combined to create ombre effect</i>
Lead Time	In-stock. Typical lead times are 1-2 weeks (Lead times are subject to change)
Exclusive	Available exclusively at Ann Sacks

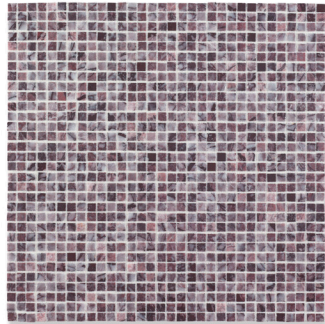
MOSAIC



Micro Mosaic
Thassos

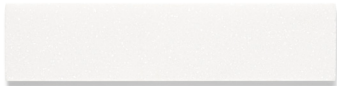


Micro Mosaic
Lotus Green

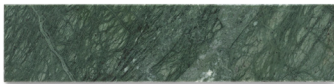


Micro Mosaic
Lilac

FIELD



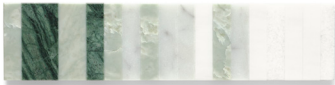
Plank
Thassos



Plank
Lotus Green



Plank
Lilac



Plank
Lotus Green/Thassos



Plank
Lilac/Thassos