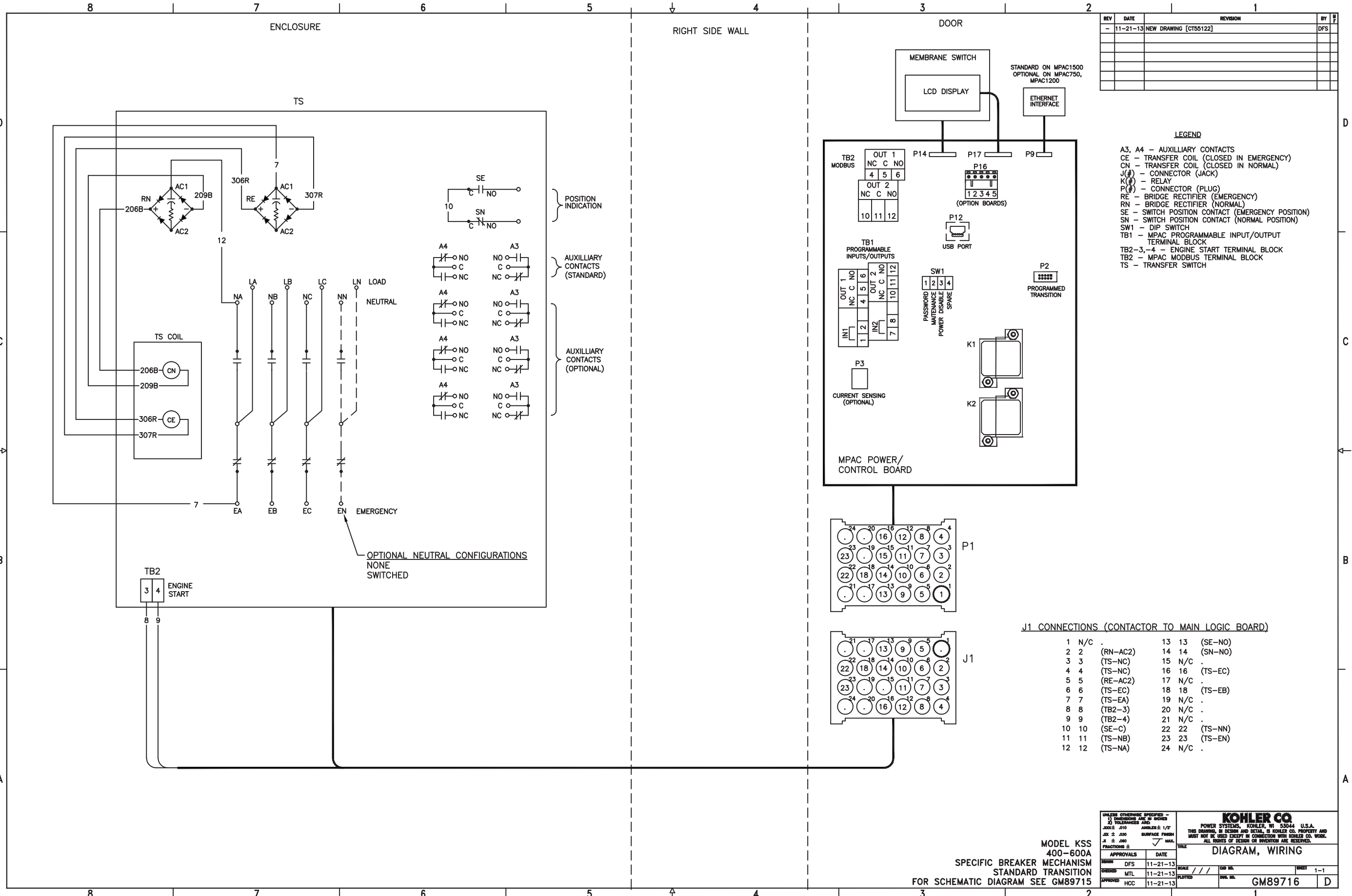


REV	DATE	REVISION	BY	APP
-	11-21-13	NEW DRAWING [CT55122]	DFS	

- LEGEND**
- A3, A4 - AUXILIARY CONTACTS
  - CE - TRANSFER COIL (CLOSED IN EMERGENCY)
  - CN - TRANSFER COIL (CLOSED IN NORMAL)
  - J(#)- CONNECTOR (JACK)
  - K(#)- RELAY
  - P(#)- CONNECTOR (PLUG)
  - RE - BRIDGE RECTIFIER (EMERGENCY)
  - RN - BRIDGE RECTIFIER (NORMAL)
  - SE - SWITCH POSITION CONTACT (EMERGENCY POSITION)
  - SN - SWITCH POSITION CONTACT (NORMAL POSITION)
  - SW1 - DIP SWITCH
  - TB1 - MPAC PROGRAMMABLE INPUT/OUTPUT TERMINAL BLOCK
  - TB2-3,-4 - ENGINE START TERMINAL BLOCK
  - TB2 - MPAC MODBUS TERMINAL BLOCK
  - TS - TRANSFER SWITCH



**J1 CONNECTIONS (CONTACTOR TO MAIN LOGIC BOARD)**

1	N/C	13	13	(SE-NO)	
2	2	(RN-AC2)	14	14	(SN-NO)
3	3	(TS-NC)	15	N/C	.
4	4	(TS-NC)	16	16	(TS-EC)
5	5	(RE-AC2)	17	N/C	.
6	6	(TS-EC)	18	18	(TS-EB)
7	7	(TS-EA)	19	N/C	.
8	8	(TB2-3)	20	N/C	.
9	9	(TB2-4)	21	N/C	.
10	10	(SE-C)	22	22	(TS-NN)
11	11	(TS-NB)	23	23	(TS-EN)
12	12	(TS-NA)	24	N/C	.

MODEL KSS  
400-600A  
SPECIFIC BREAKER MECHANISM  
STANDARD TRANSITION  
FOR SCHEMATIC DIAGRAM SEE GM89715

UNLESS OTHERWISE SPECIFIED -  
1) DIMENSIONS ARE IN INCHES  
2) TOLERANCES ARE:  
FRACTIONS ± .005  
DECIMALS ± .010  
ANGLES ± 1/2°  
SURFACE FINISH  
AS SHOWN

**KOHLER CO.**  
POWER SYSTEMS, KOHLER, WI 53044 U.S.A.  
THIS DRAWING, IN DESIGN AND DETAIL, IS KOHLER CO. PROPERTY AND  
MUST NOT BE USED EXCEPT IN CONNECTION WITH KOHLER CO. WORK.  
ALL RIGHTS OF DESIGN OR INVENTION ARE RESERVED.

**DIAGRAM, WIRING**

APPROVALS	DATE	SCALE	CAD NO.	SHEET	TITLE
DESIGN DFS	11-21-13	///		1-1	
DRAWING MTL	11-21-13				
APPROVED HCC	11-21-13				

DRW. NO. **GM89716**