

Mason

Mason, a new addition to the MADE by Ann Sacks collection, is elevated by the artisans at Ann Sacks, taking a simple masonry brick and transforming it with a rich palette of matte and crackle glazes. The rugged surface creates the perfect medium for Ann Sacks' handcrafted glazes, which pool and break over the surface, resulting in a reflective quality that moves with shifting light patterns.



2"x8" Obsidian

RECOMMENDED USE

- Suitable for all indoor wall applications — not suitable for usage in wet areas
- Outdoor use subject to climate and method of installation
- Suitable for high temperature areas such as behind ranges and fireplace surrounds
- Not suitable for flooring



wall

INSTALLATION AND MAINTENANCE

- Install per TCNA Handbook for ceramic tile
- 1/8" grout joint is recommended due to variation in facial dimension
- Always inspect material prior to installation — installed material cannot be accepted for return or credit
- Always lay out material prior to installation to properly blend and balance color

COLLECTION

Size	2"x8" (2.250" x 7.500" x 0.600")
Material	Brick
Color	Earthenware: Crystal, Deep Midnight Stoneware: Faded Denim, Lichen, Murphy, Obsidian, Poseidon
Lead Time	In-stock. Lead times are 1-2 weeks. <i>(Lead Times are subject to change)</i>

*Please note: variations in color, shade, surface texture and size are natural characteristics of all our products and should be expected. Images shown are representative, but may not indicate all variations in these characteristics.

8/2018

Mason

COLORS



Crystal



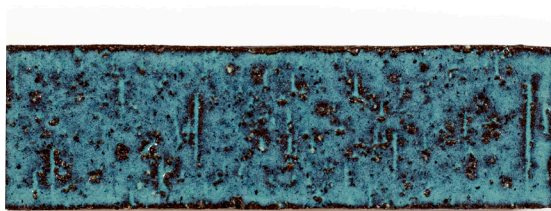
Murphy



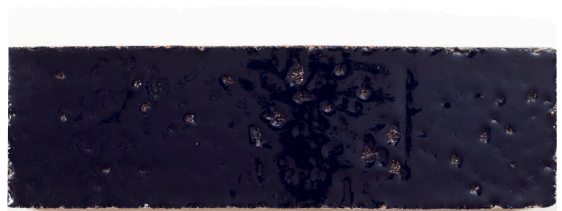
Faded Denim



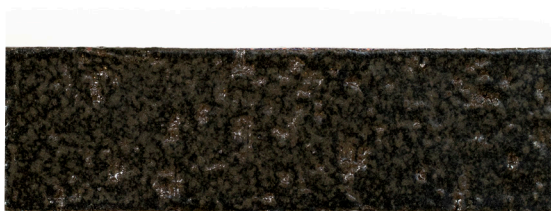
Lichen



Poseidon



Deep Midnight



Obsidian

*Please note: variations in color, shade, surface texture and size are natural characteristics of all our products and should be expected. Images shown are representative, but may not indicate all variations in these characteristics.

8/2018